



This all new LCG crawler chassis system is designed specifically for the **313mm/12.3" wheelbase SCX10 III platform.**

Designed with state of the art 3D modeling software to optimize suspension geometry, component location and center of gravity.

Kit features:

- 3k Carbon Fiber Twill weave matte finish frame rails, motor plate and front bumper
- All new "divorced" primary drive and an extremely compact and lightweight transfer case
- Stainless Steel primary drive and transfer case shafts
- Stainless Steel screws, nuts and misc hardware
- Genuine Vanquish Incision 52t 32p spur gear included (56t limit)
- Excellent weight distribution, low center of gravity
- Improved suspension geometry with built in anti squat and a low instant center
- Includes adjustable droop strap (rubber band) mount at the rear
- 3D printed parts are made from a proprietary blend of plastics for terrific impact and heat resistance
- For optimum performance a full droop setup front and rear is recommended. Just add your axles, links, driveshafts and electronics package and hit the rocks!

Eliminate the guesswork!

Optional Parts:

- 6mm or 8mm knurled black anodized front bumper bar
- Extended Skid – This is the long length skid plate for up to 40mm length motors (i.e. Holmes Stubby Revolver, 3 Bros Yellow Jacket, Holmes Revolver V2, Team Brood Riot S etc...)
- Standard Skid – This is the standard length skid plate for up to 550 size motors including HW Fusion

Required parts not included:

- Axial SCX10 III AR45 Axles, suspensions links, shocks and driveshafts
- Traxxas servo mounting screws
- Traxxas 8115 body mount kit
- Electronics package
- Wheels/tires

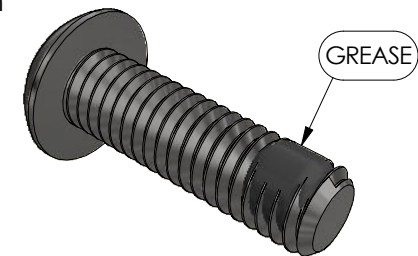


FIGURE 1



F-BH30 - (4)
M3x30mm Button Head



F-BH25 - (5)
M3x25mm Button Head



F-BH20 - (4)
M3x20mm Button Head



F-BH18 - (3)
M3x18mm Button Head



F-BH16 - (12)
M3x16mm Button Head



F-BH12 - (7)
M3x12mm Button Head



F-BH10 - (18)
M3x10mm Button Head



F-BH08 - (4)
M3x8mm Button Head



F-BH06 - (5)
M3x6mm Button Head



F-SS16 - (2)
M3x16mm Set Screw



F-SS20 - (4)
M4x20 Set Screw



D-B5114 - (6)
5x11x4 Bearing



D-B4114 - (1)
4x11x4 Bearing



D-DP10 - (1)
2.5mm x 10mm Dowel Pin



D-DP12 - (1)
2.5mm x 12mm Dowel Pin



D-FW04 - (1)
4mm Flat Washer



F-LN03 - (3)
3mm Locknut



F-LN04 - (1)
M4mm Lock Nut



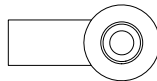
C-SP33 - (5)
3x3 Spacer



D-SP55 - (1)
5x5 Spacer



F-EC04 - (3)
4mm E Clip



C-REST - (2)
Rod End Straight



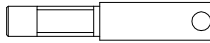
C-RRES - (4)
4mm Rod End



D-TCBS - (1)
Transfer Case Bottom Shaft



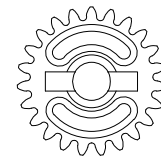
D-PDMS - (1)
Transmission Shaft



D-TCTS - (1)
Transfer Case Top Shaft



D-TCTG - (1)
Transfer Case Top Gear



D-TCBG - (1)
Transfer Case Bottom Gear



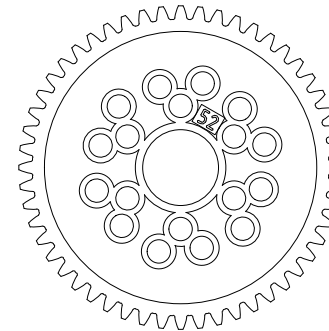
C-SP70 - (2)
70mm Chassis Spacer



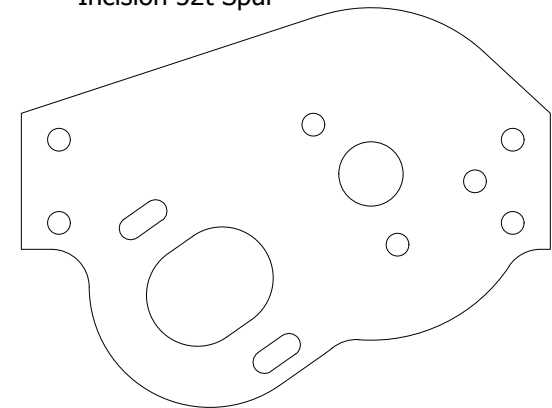
C-LKUF50 - (1)
Upper Front Link



C-LKDP - (2)
50mm Drag/Panhard Link



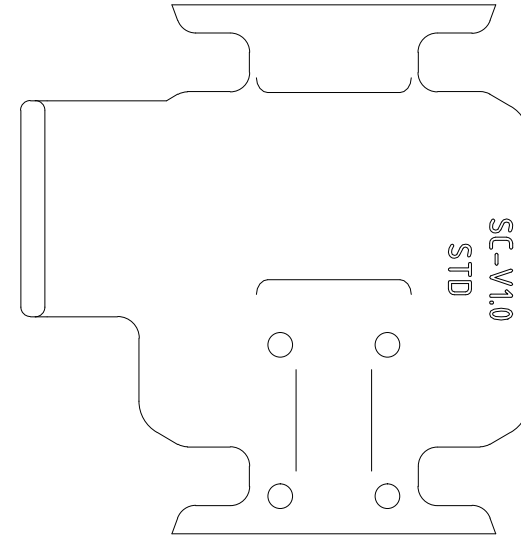
D-SG52 - (1)
Incision 52t Spur



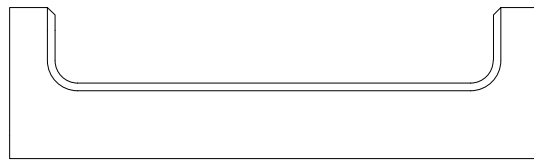
SC-D-PDMP - (1)
SC Carbon Motor Plate



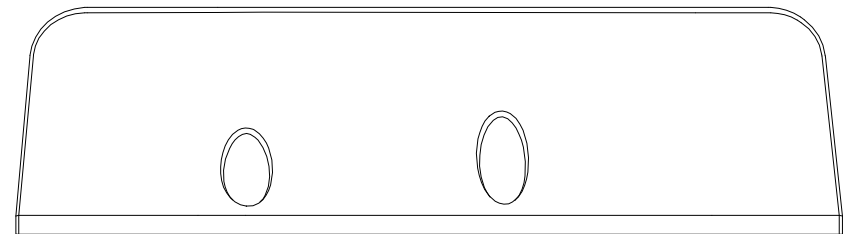
SC-C-3DRB - (1)
SC-V1 Rear Bumper



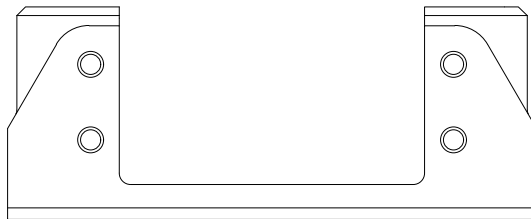
SC-C-3DSS - (1)
SC-V1 Standard Skid



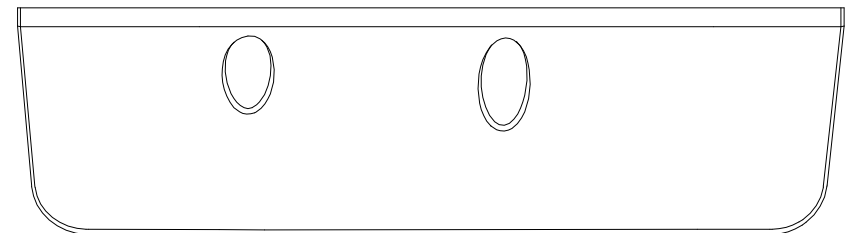
SC/CC-C-3DFB - (1)
SC-V1 Front Bumper



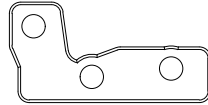
SC-C-3DSR - (1)
Narrow Slider Right



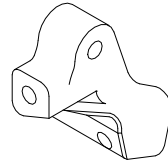
SC-C-3DSM - (1)
SC-V1 Servo Mount



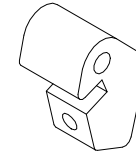
SC-C-3DSL - (1)
Narrow Slider Left



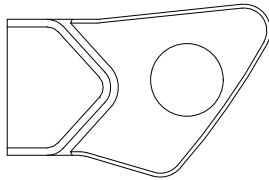
D-PMFR - (1)
Panhard Bracket - Front



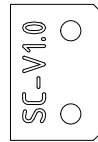
D-PMRR - (x)
Panhard Bracket - Rear



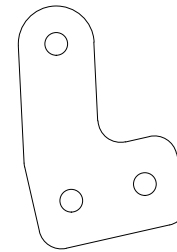
D-PMLR - (x)
Panhard Bracket - Filler



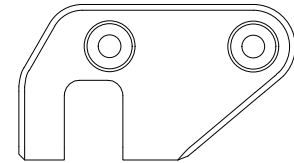
SC-C-3DBC - (1)
SC-V1 Bearing Case



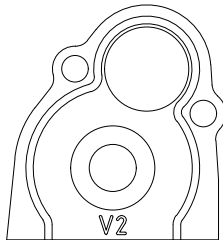
SC-C-3DPM - (1)
SC-V1 Pass Motor Plate Mount



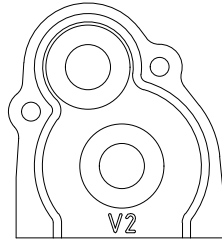
SC/CC-C-3DCB - (2)
SC/CC Carbon Bumper



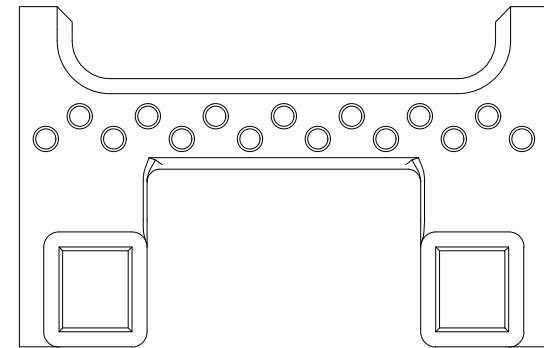
SC-C-3DPM - (1)
SC-V1 Panhard Mount



D-TCRE - (1)
Transfer Case Rear Half

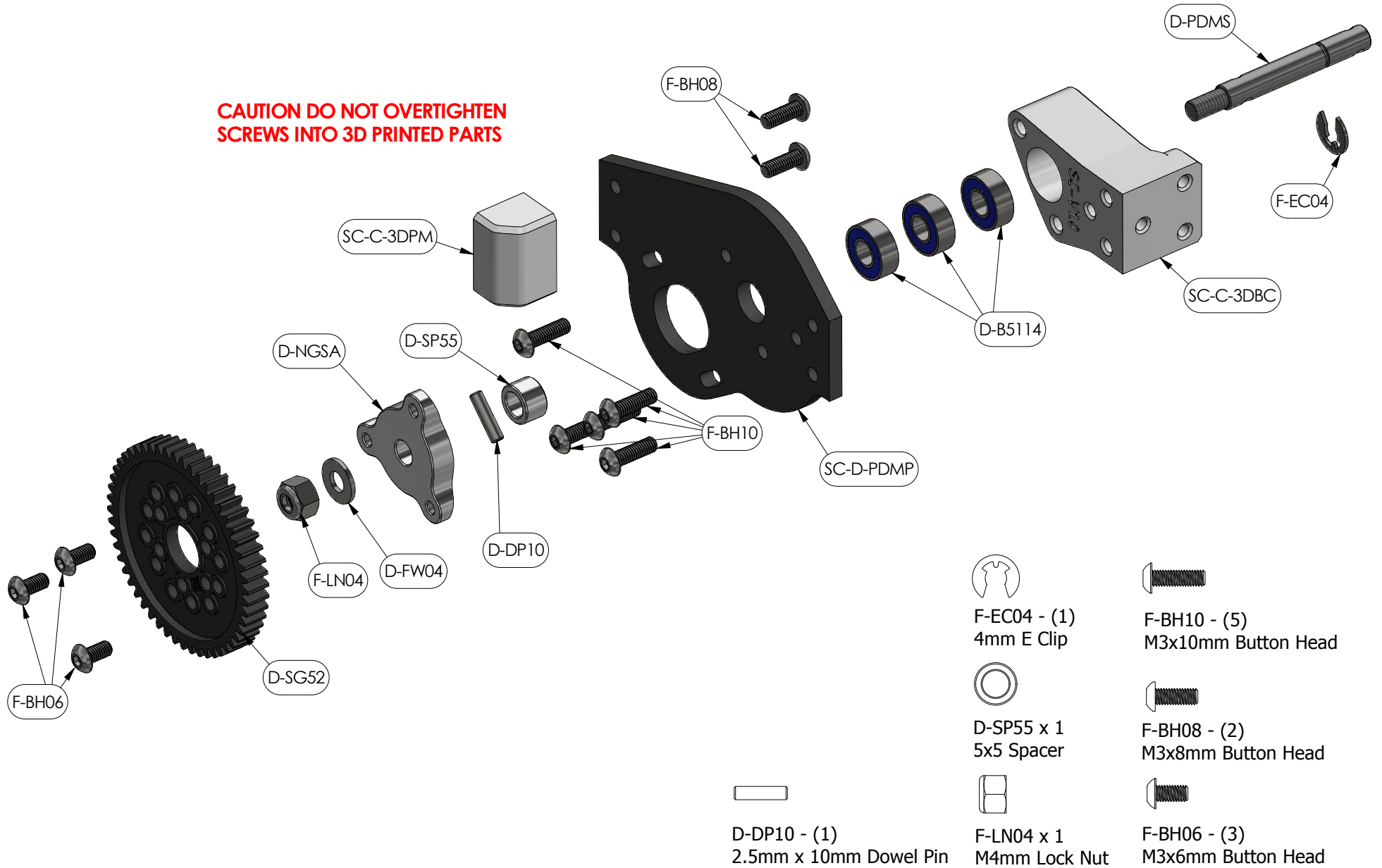


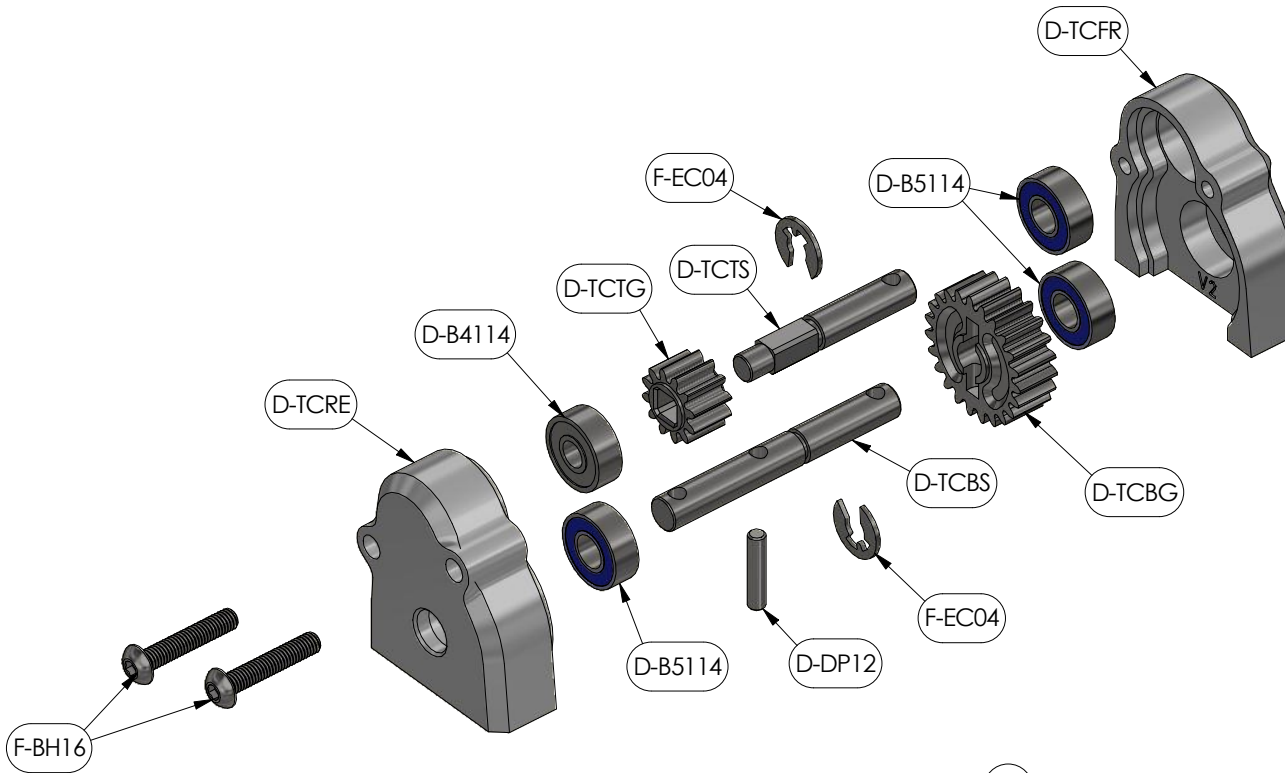
D-TCFR - (1)
Transfer Case Front Half



C-3DBR - (1)
Rear Body Mount

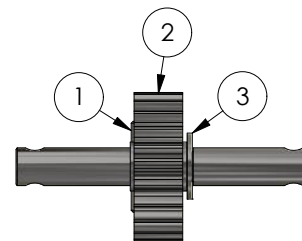
**CAUTION DO NOT OVERTIGHTEN
SCREWS INTO 3D PRINTED PARTS**





**CAUTION DO NOT OVERTIGHTEN
SCREWS INTO 3D PRINTED PARTS**

MINIMAL GREASE REQUIRED



BOTTOM SHAFT ASSEMBLY ORDER:

1. CROSS PIN
2. GEAR
3. E-CLIP



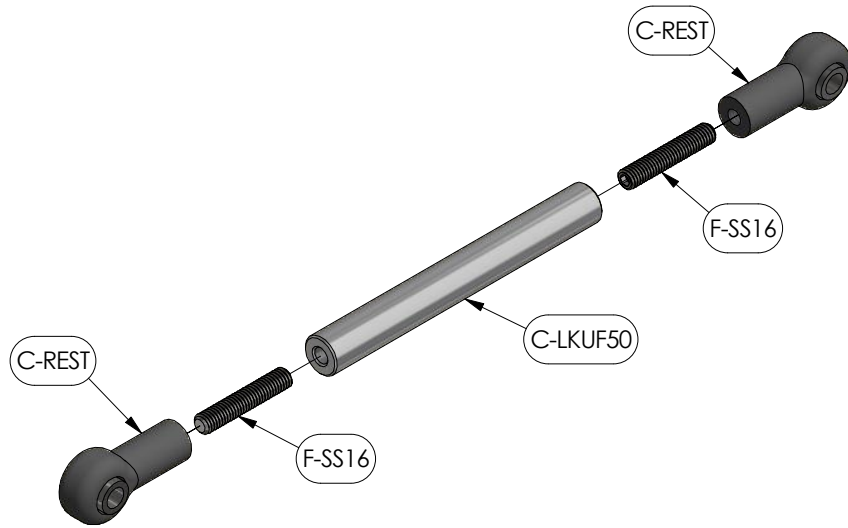
D-DP12 - (1)
2.5mm x 12mm Dowel Pin



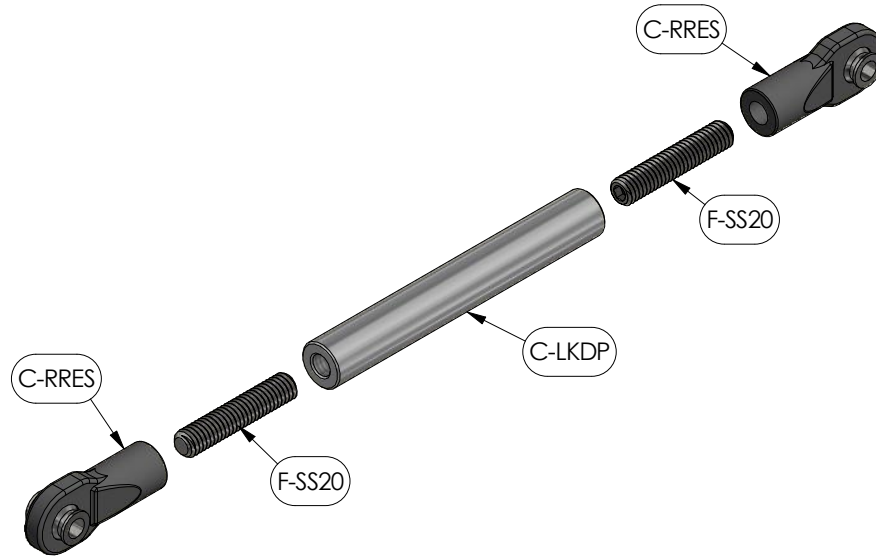
F-EC04 - (2)
4mm E Clip



F-BH16 - (2)
M3x16mm Button Head



Upper Front Link



Panhard Link/Drag Link - Qty (2)

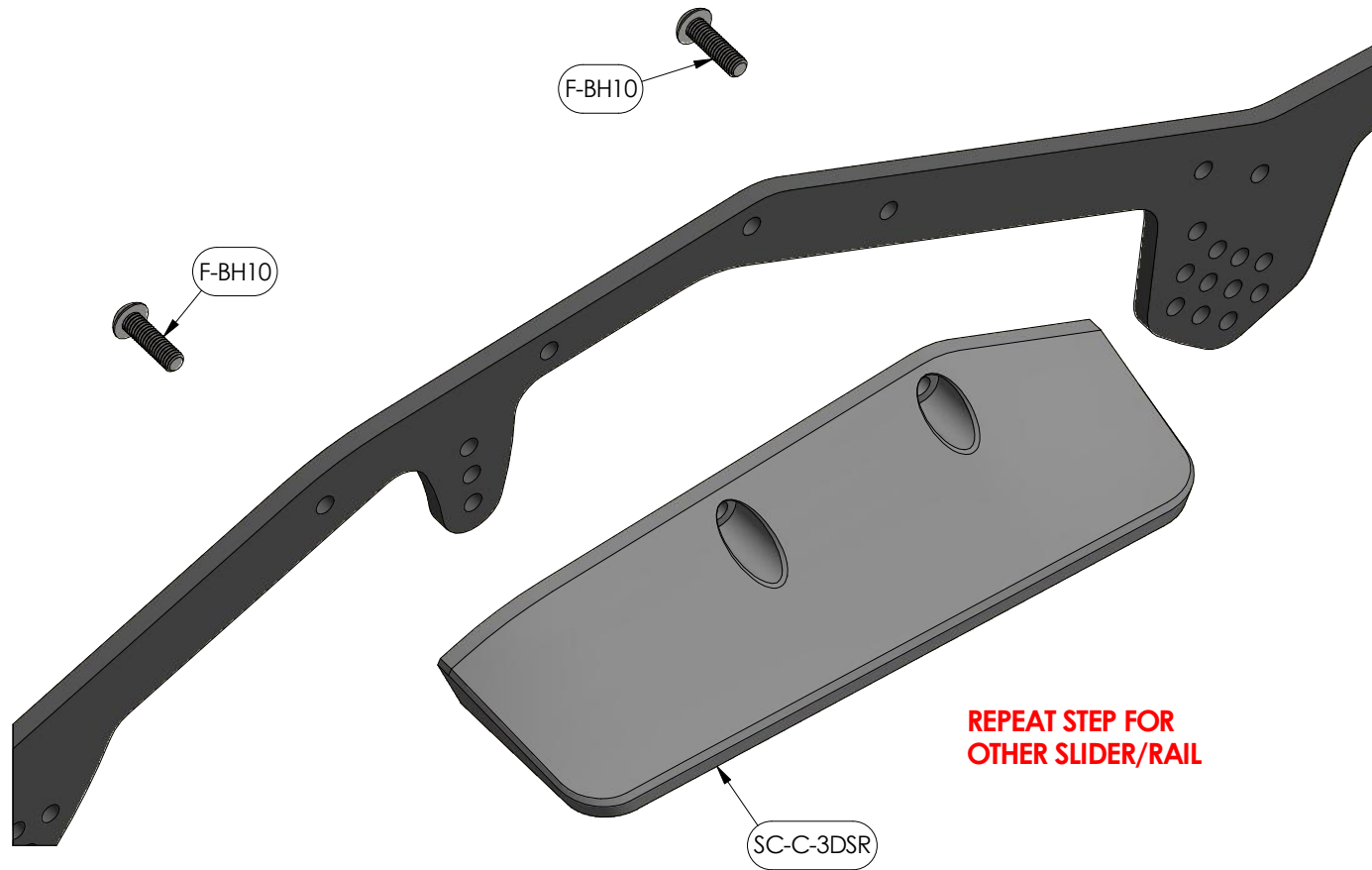
**NOTE CLOCK ONE
END 90° FOR DRAG LINK**



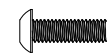
F-SS16 - (2)
M3x16mm Set Screw



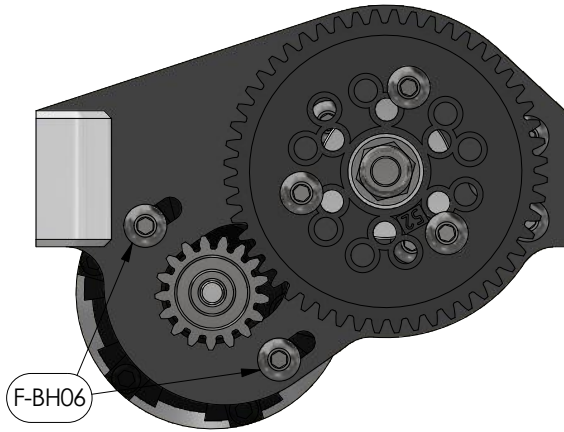
F-SS20 - (4)
M4x20 Set Screw



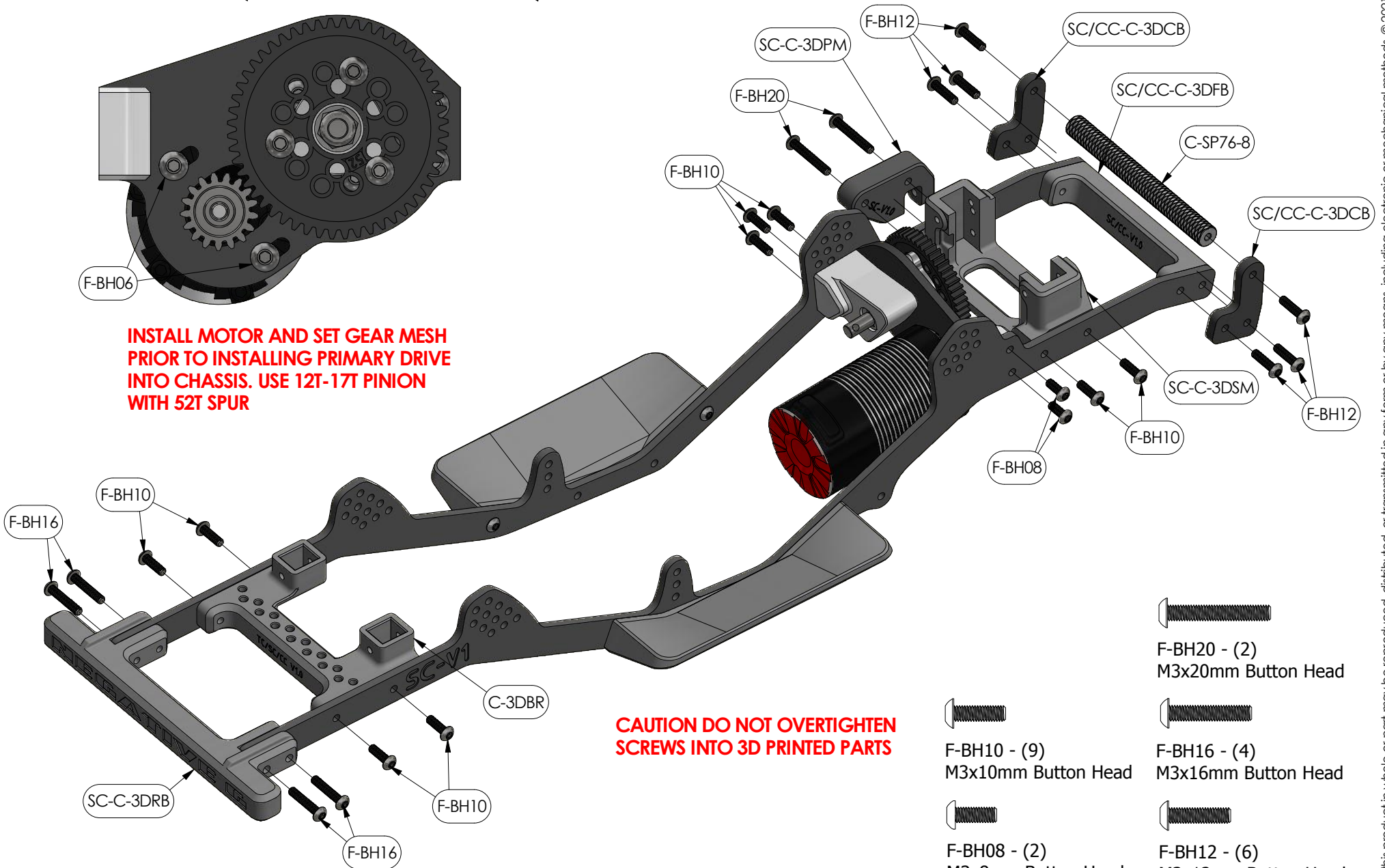
**REPEAT STEP FOR
OTHER SLIDER/RAIL**








F-BH10 - (4)
M3x10mm Button Head

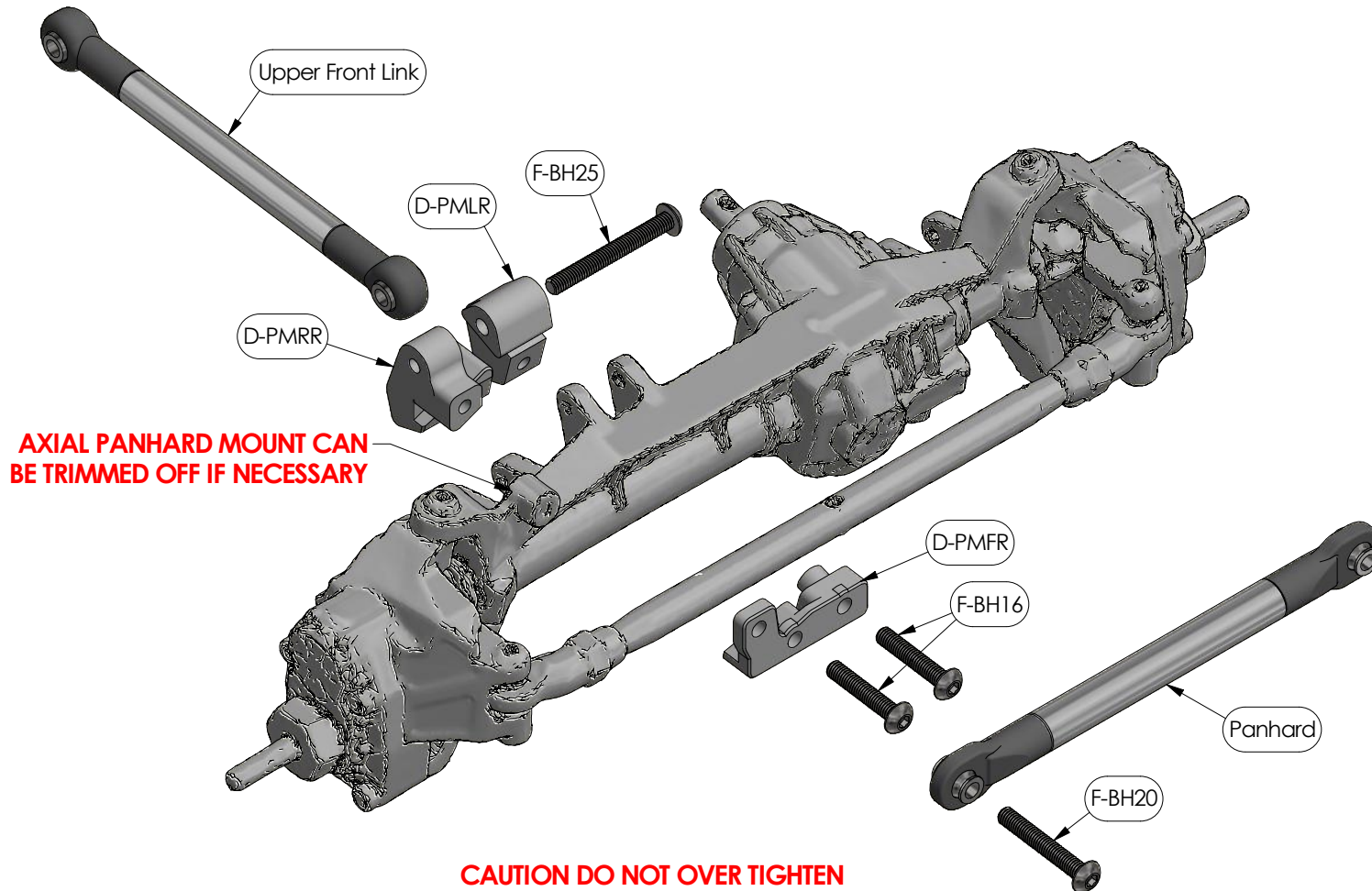


INSTALL MOTOR AND SET GEAR MESH PRIOR TO INSTALLING PRIMARY DRIVE INTO CHASSIS. USE 12T-17T PINION WITH 52T SPUR



CAUTION DO NOT OVERTIGHTEN SCREWS INTO 3D PRINTED PARTS

-  F-BH20 - (2)
M3x20mm Button Head
-  F-BH10 - (9)
M3x10mm Button Head
-  F-BH08 - (2)
M3x8mm Button Head
-  F-BH16 - (4)
M3x16mm Button Head
-  F-BH12 - (6)
M3x12mm Button Head



AXIAL PANHARD MOUNT CAN BE TRIMMED OFF IF NECESSARY

CAUTION DO NOT OVER TIGHTEN SCREWS INTO 3D PRINTED PARTS

INSTALL PANHARD BRACKET PARTS FIRST, THEN PANHARD AND UPPER FRONT LINK



F-BH25 - (1)
M3x25mm Button Head

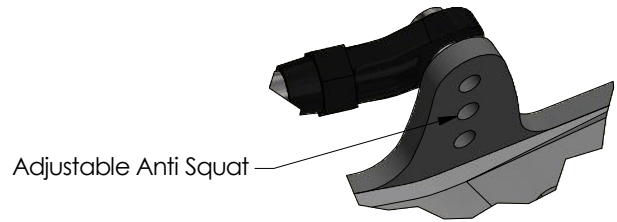
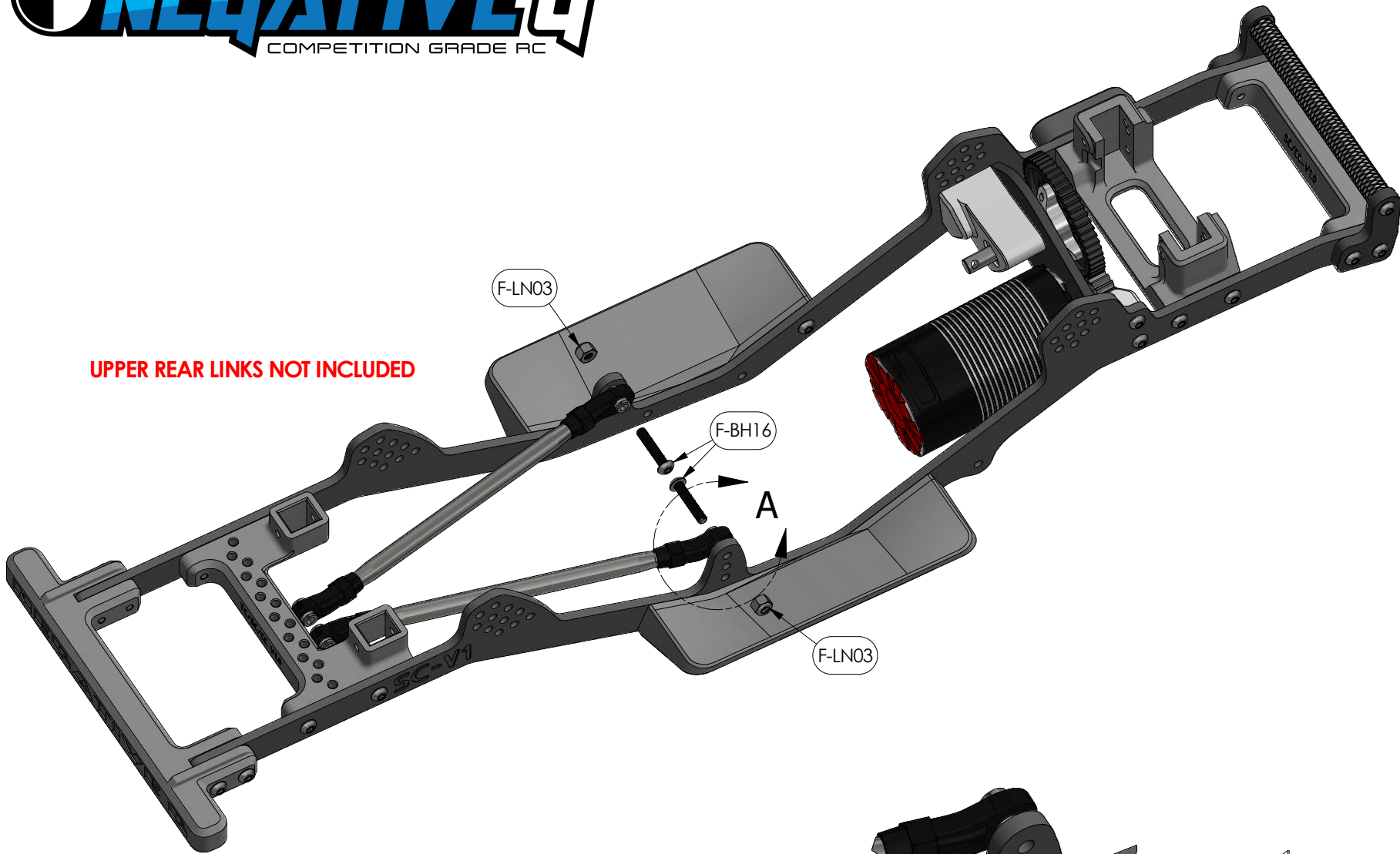


F-BH20 - (1)
M3x20mm Button Head



F-BH16 - (2)
M3x16mm Button Head

UPPER REAR LINKS NOT INCLUDED



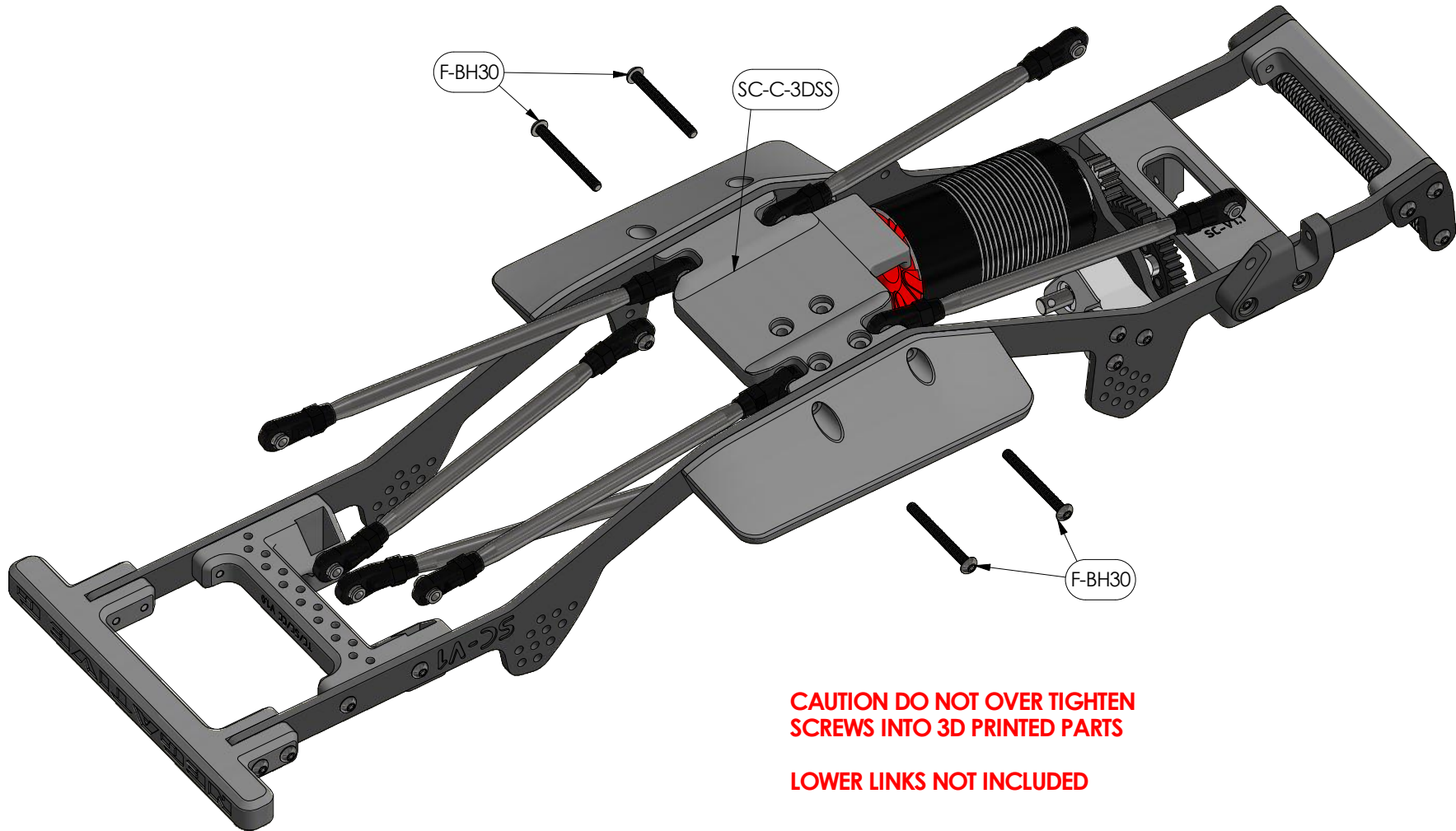
DETAIL - A



F-BH16 - (2)
M3x16mm Button Head



F-LN03 - (2)
3mm Locknut

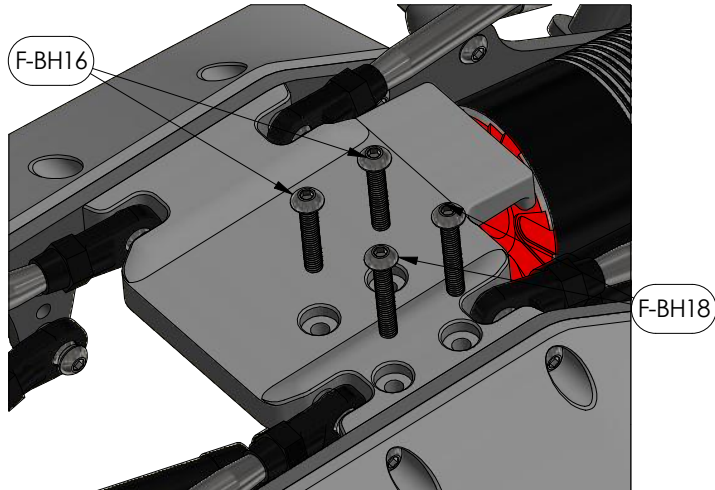


**CAUTION DO NOT OVER TIGHTEN
SCREWS INTO 3D PRINTED PARTS**

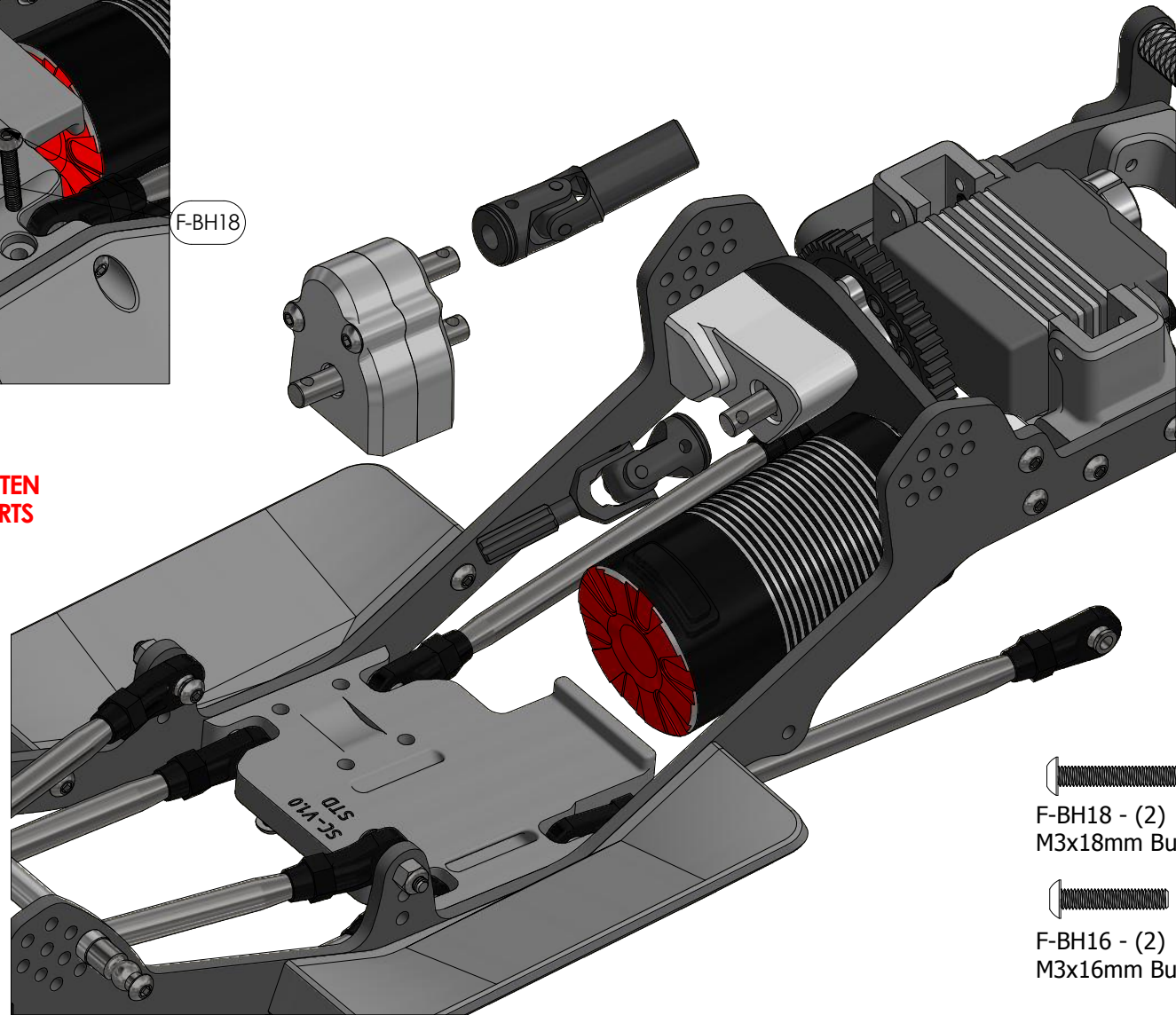
LOWER LINKS NOT INCLUDED



F-BH30 - (4)
M3x30mm Button Head



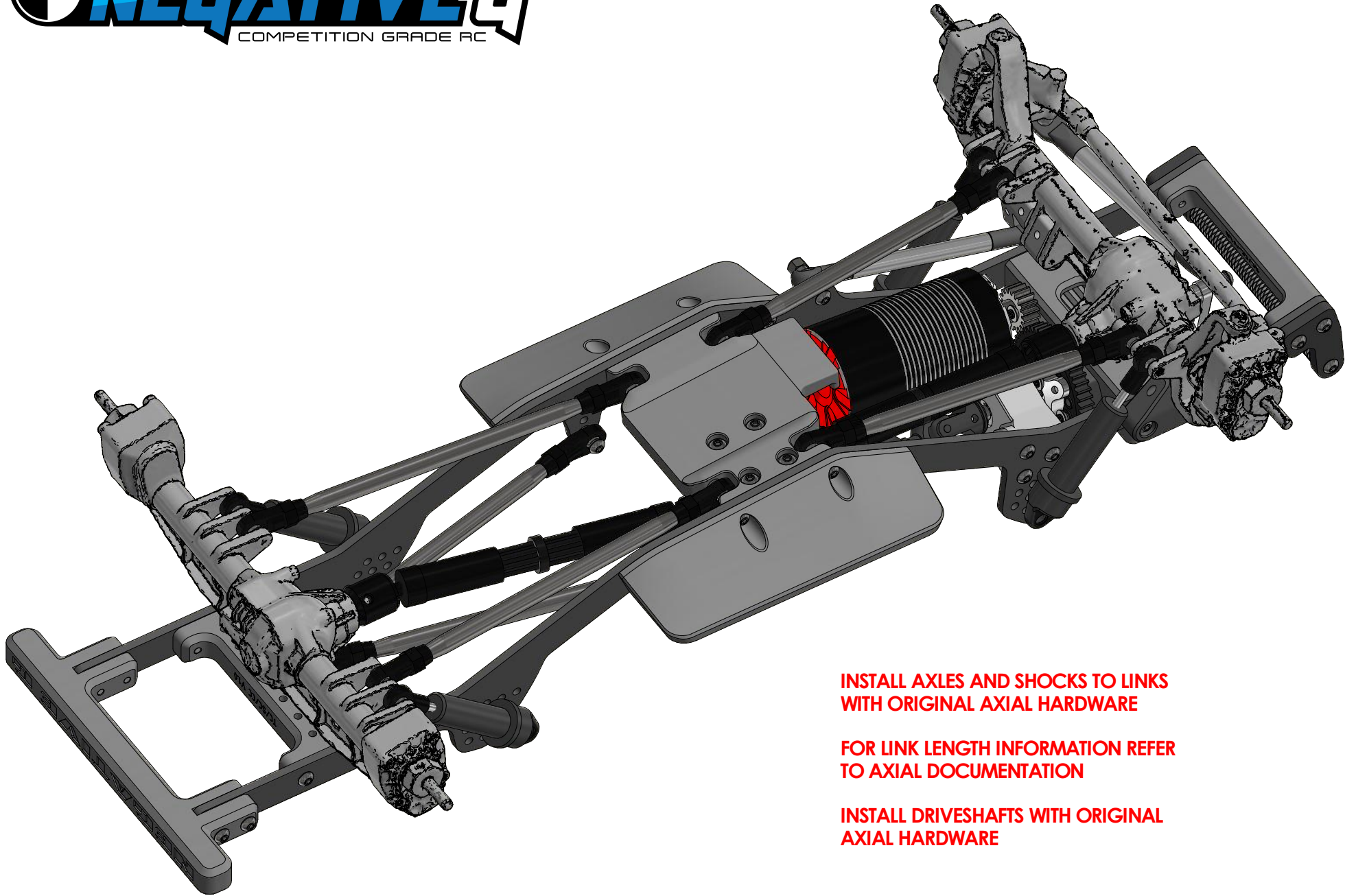
**CAUTION DO NOT OVERTIGHTEN
SCREWS INTO 3D PRINTED PARTS**



F-BH18 - (2)
M3x18mm Button Head



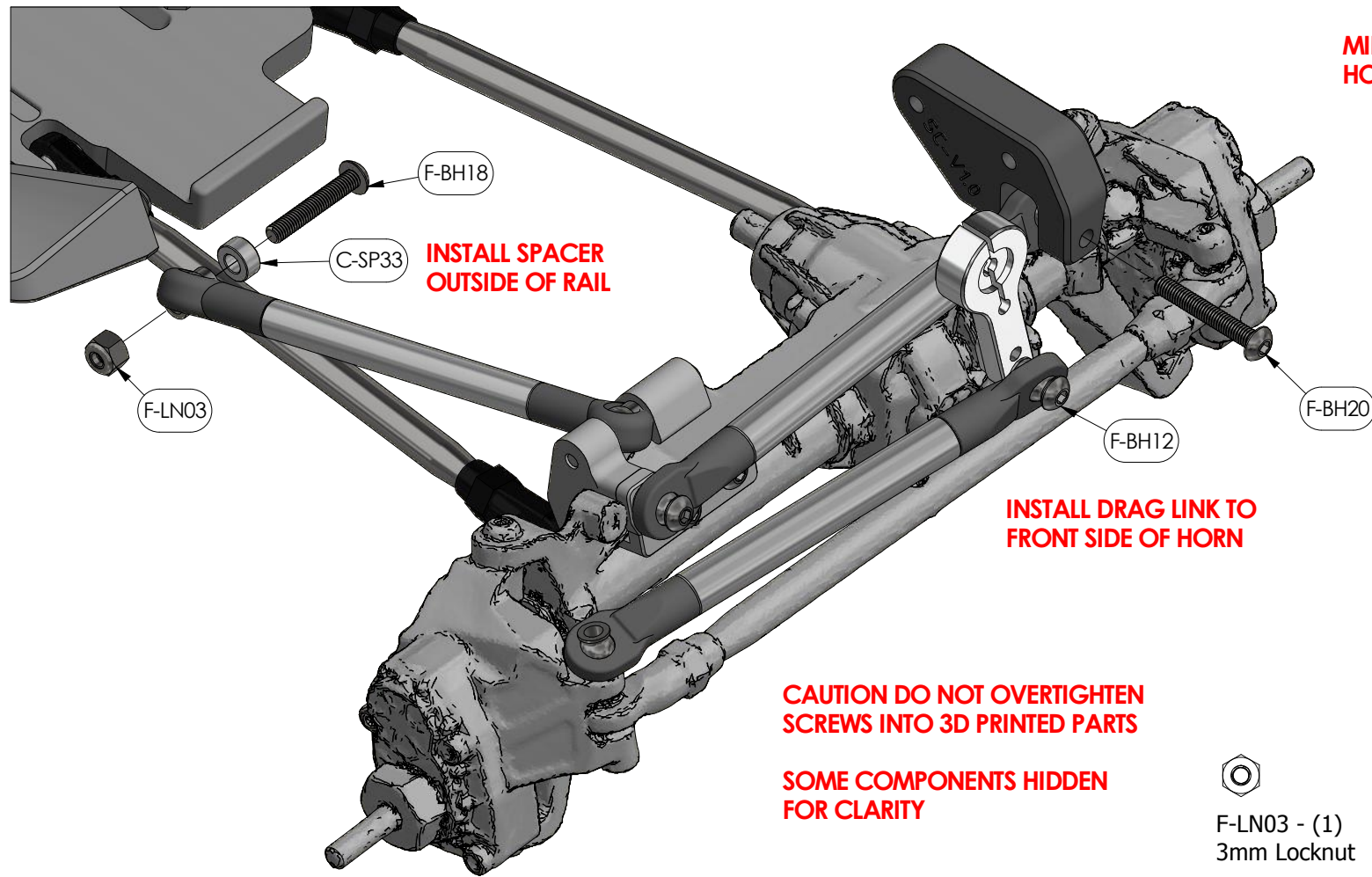
F-BH16 - (2)
M3x16mm Button Head



**INSTALL AXLES AND SHOCKS TO LINKS
WITH ORIGINAL AXIAL HARDWARE**

**FOR LINK LENGTH INFORMATION REFER
TO AXIAL DOCUMENTATION**

**INSTALL DRIVESHAFTS WITH ORIGINAL
AXIAL HARDWARE**

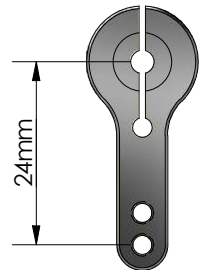


**INSTALL SPACER
OUTSIDE OF RAIL**






**INSTALL DRAG LINK TO
FRONT SIDE OF HORN**

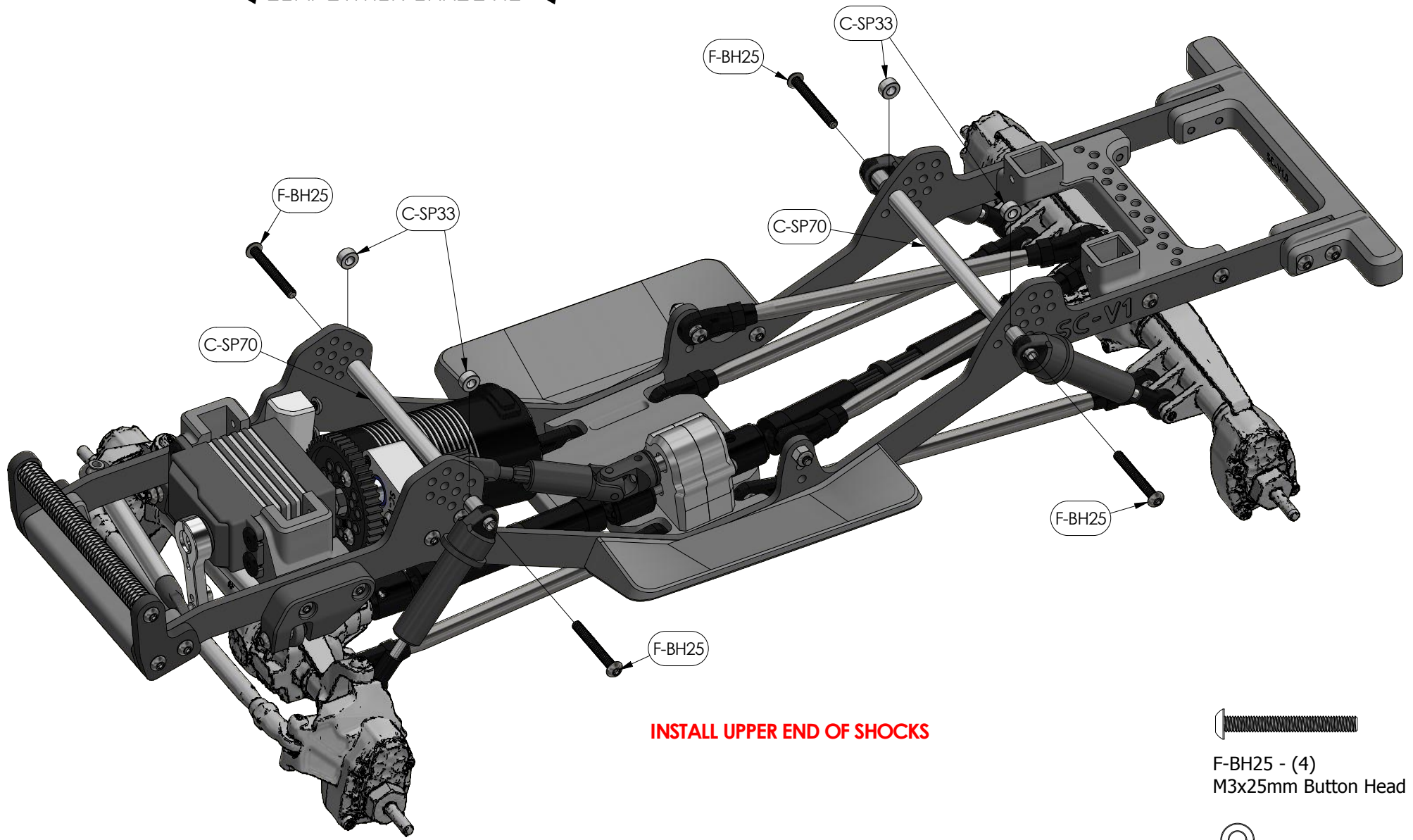
**CAUTION DO NOT OVERTIGHTEN
SCREWS INTO 3D PRINTED PARTS**

**SOME COMPONENTS HIDDEN
FOR CLARITY**



**MINIMUM 24MM SERVO
HORN REQUIRED**

-  F-BH25 - (1)
M3x25mm Button Head
-  F-BH20 - (2)
M3x20mm Button Head
-  F-BH18 - (1)
M3x18mm Button Head
-  F-LN03 - (1)
3mm Locknut
-  C-SP33 - (1)
3x3 Spacer



INSTALL UPPER END OF SHOCKS

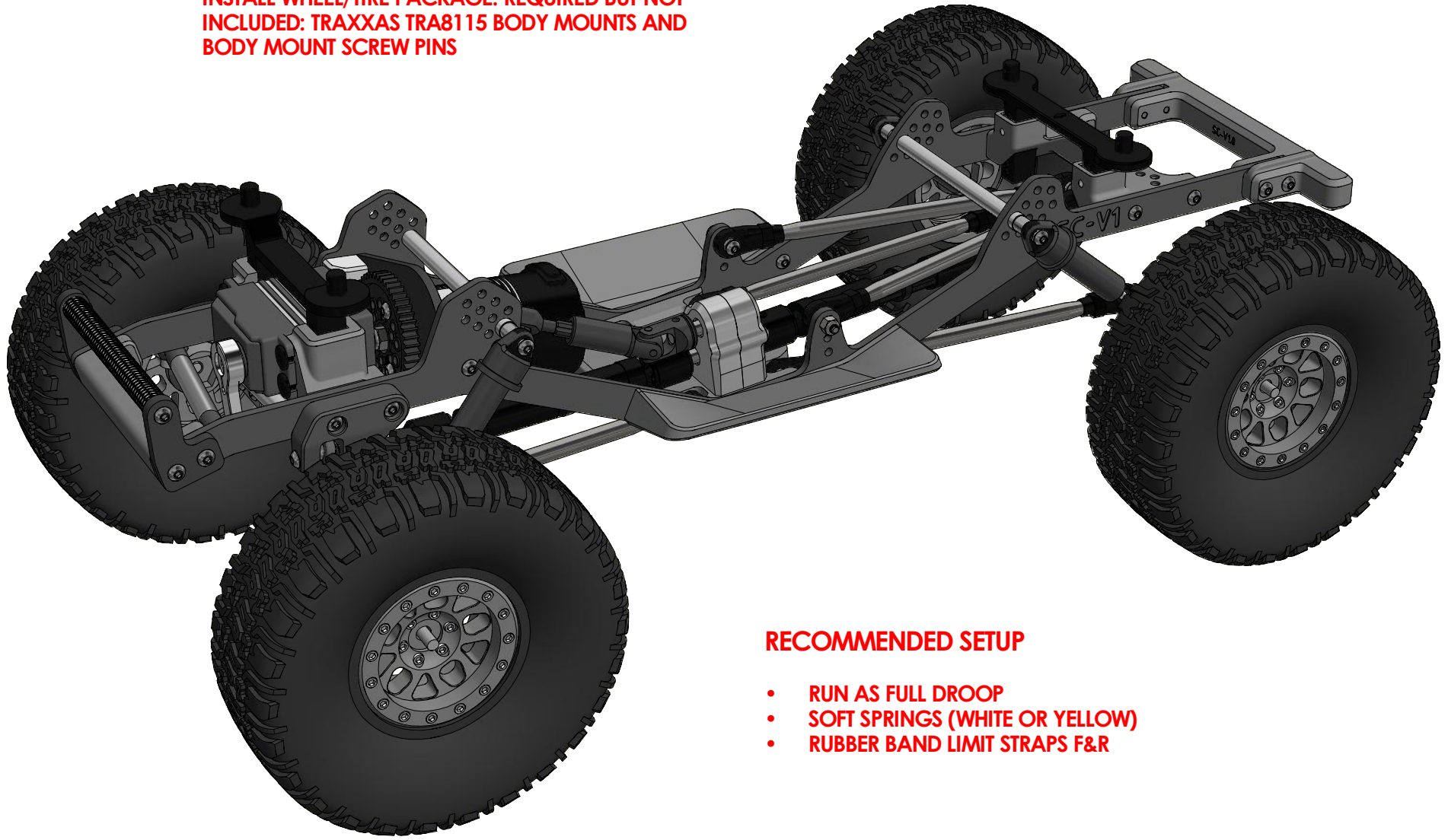


F-BH25 - (4)
M3x25mm Button Head



C-SP32 - (4)
3x2 Spacer

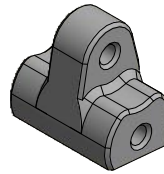
INSTALL WHEEL/TIRE PACKAGE. REQUIRED BUT NOT INCLUDED: TRAXXAS TRA8115 BODY MOUNTS AND BODY MOUNT SCREW PINS



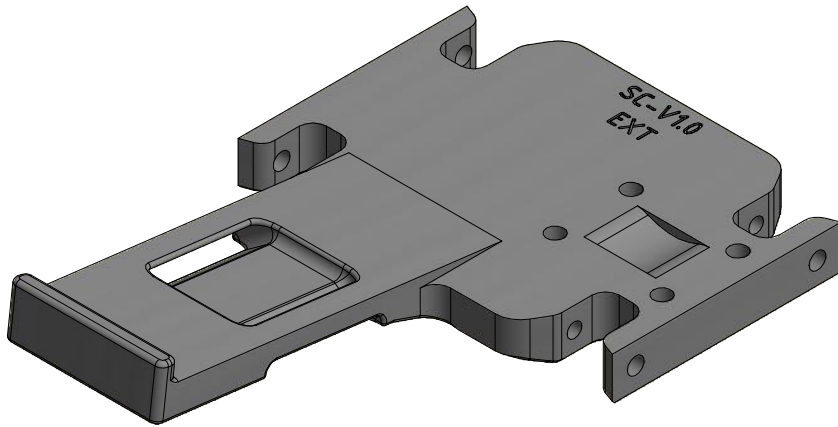
RECOMMENDED SETUP

- **RUN AS FULL DROOP**
- **SOFT SPRINGS (WHITE OR YELLOW)**
- **RUBBER BAND LIMIT STRAPS F&R**

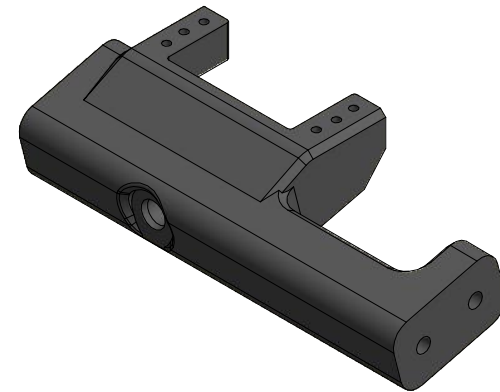
OPTIONAL PARTS
CHECK <http://www.negativegrc.com> FOR AVAILABILITY AND PRICING



SC-C-3DLR
SC Link Riser Rear



SC-C-3DSE
Extended Skid



CC/SC-WM
Micro Winch Mount

DON'T LET GRAVITY WIN!