



This **LCG Class 2 chassis system** is designed specifically for the **313mm/12.3"** wheelbase **TRX-4 platform**.

Kit features:

- ***NEW*** All plastic parts are printed with **ultra lightweight high-tech polymer PA12 Nylon** using **SLS technology** (Selective Laser Sintering)
- Divorced primary drive with a compact and lightweight **Generation 2** transfer case
- Stainless Steel primary drive and transfer case shafts
- Stainless Steel screws, nuts and miscellaneous hardware
- Genuine **Vanquish Incision** 52t 32p spur gear included
- Excellent weight distribution, low center of gravity
- Improved suspension geometry with built in anti squat and a low instant center
- Steel prop shaft with brass pivot balls
- Your choice of 2 skid plates: Standard for 540/550 motors and Extended for shorter outrunner style motors up to 40mm in length
- 3mm Carbon Fiber matte twill weave frame rails with integrated shock mounts
- 3mm Carbon Fiber matte twill weave motor mount plate
- Lay down servo mount
- 12.3" approximate wheelbase
- For optimum performance a **full droop setup front and rear is recommended**. Just add your axles, links, driveshafts, shocks and electronics package and hit the rocks!

Required parts not included:

- Traxxas TRX-4 Axles, suspensions links, drive shafts and shocks
- Traxxas 3931 3x8 flanged screws or equivalent
- Traxxas 8115 body mount kit
- Electronics package
- Wheels/tires
- Body

! CAUTION !

DO NOT OVERTIGHTEN SCREWS INTO 3D PRINTED PARTS. POWERED SCREWDRIVERS GENERATE HEAT WHEN INSTALLING SCREWS. IF YOU ARE USING A POWERED SCREWDRIVER, INSTALL TO 75% DEPTH AND LET THE PLASTIC COOL OFF. HAND TIGHTEN TO 100%.

STRIPPED HOLES ARE NOT COVERED UNDER WARRANTY!

Please read this entire instruction book prior to assembly



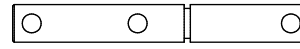
F-BH30 - (9)
M3x30mm Button Head



F-BH06 - (3)
M3x6mm Button Head



C-SP33 - (1)
3x3 Spacer



D-TCBS - (1)
Transfer Case Bottom Shaft



C-SP70 - (2)
M3x70mm Chassis Spacer



F-BH25 - (4)
M3x25mm Button Head



D-B5114 - (5)
5x11x4 Bearing



C-SP34 - (1)
3x4 Spacer



D-TS - (1)
Transmission Shaft



NG-UFLK - (1)
Upper Front Link



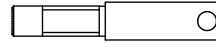
F-BH20 - (3)
M3x20mm Button Head



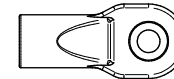
D-B5104-F - (1)
5x10x4 Bearing Flanged



C-SP35 - (4)
3x5 Spacer



D-TCTS - (1)
Transfer Case Top Shaft



C-RRES - (2)
4mm Rod End



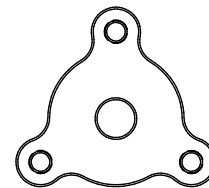
F-BH18 - (1)
M3x18mm Button Head



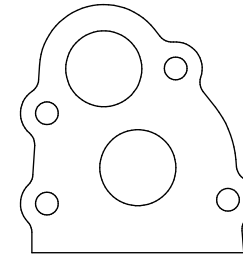
D-B4104-F - (1)
4x10x4 Bearing Flanged



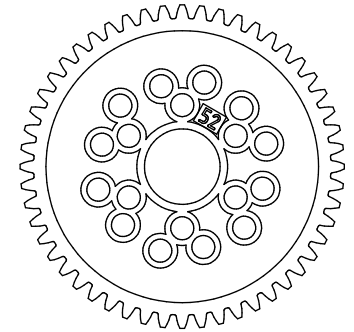
C-SP36 - (1)
3x6 Spacer



D-NGSA - (1)
Spur Adapter v2



D-PX-COV - (1)
Gen 2 Portal Cover Plate



D-SG52 - (1)
Incision 52t Spur



F-BH16 - (4)
M3x16mm Button Head



F-LN03 - (4)
3mm Locknut



D-SP55 - (1)
5x5 Spacer



F-BH12 - (16)
M3x12mm Button Head



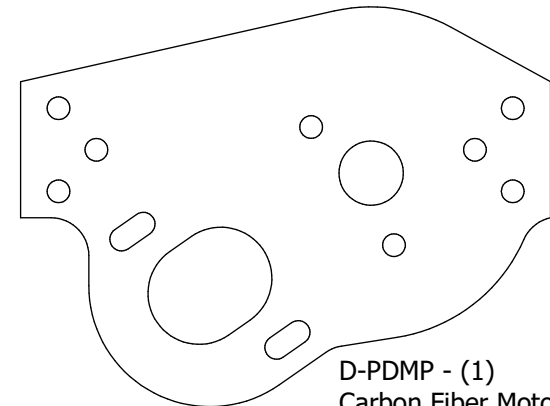
F-LN04 - (1)
M4mm Lock Nut



F-FW04 - (1)
4mm Flat Washer



D-TCTG - (1)
Transfer Case Top Gear



D-PDMP - (1)
Carbon Fiber Motor Plate



F-BH10 - (24)
M3x10mm Button Head



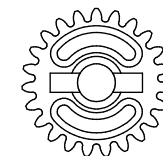
D-DP10 - (2)
2.5mm x 10mm Dowel Pin



F-EC04 - (3)
4mm E Clip

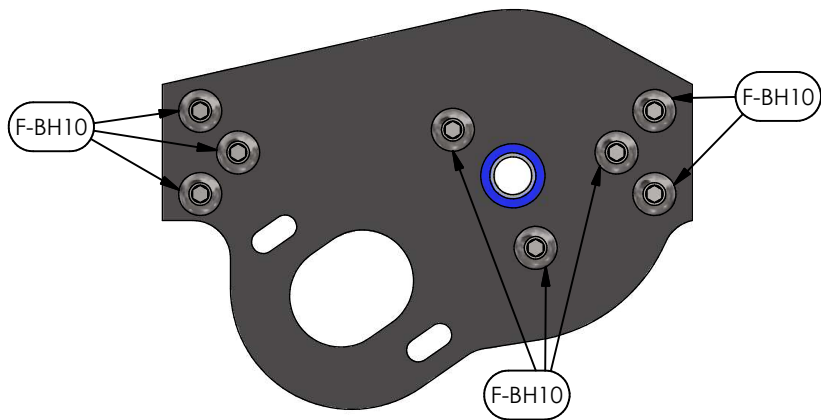
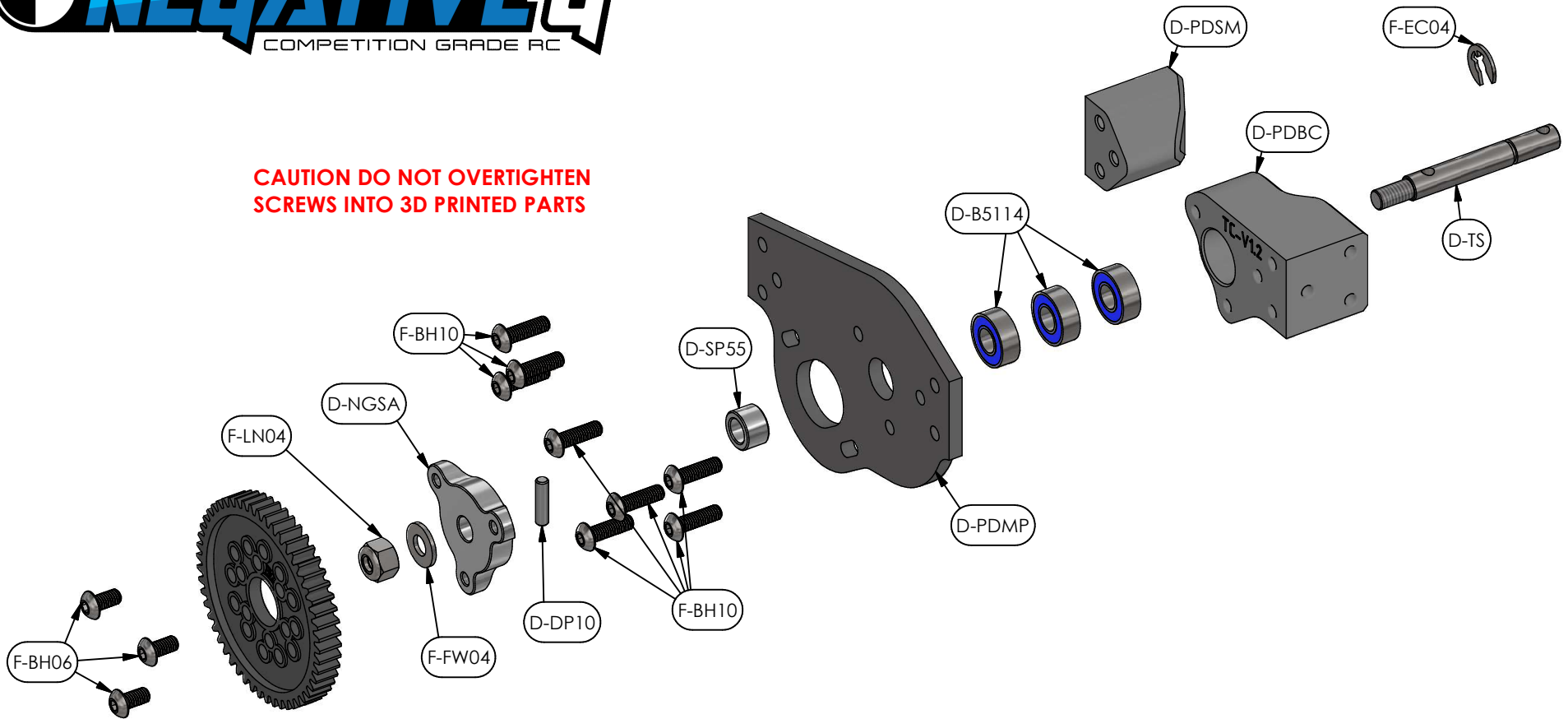


F-BH08 - (1)
M3x8mm Button Head



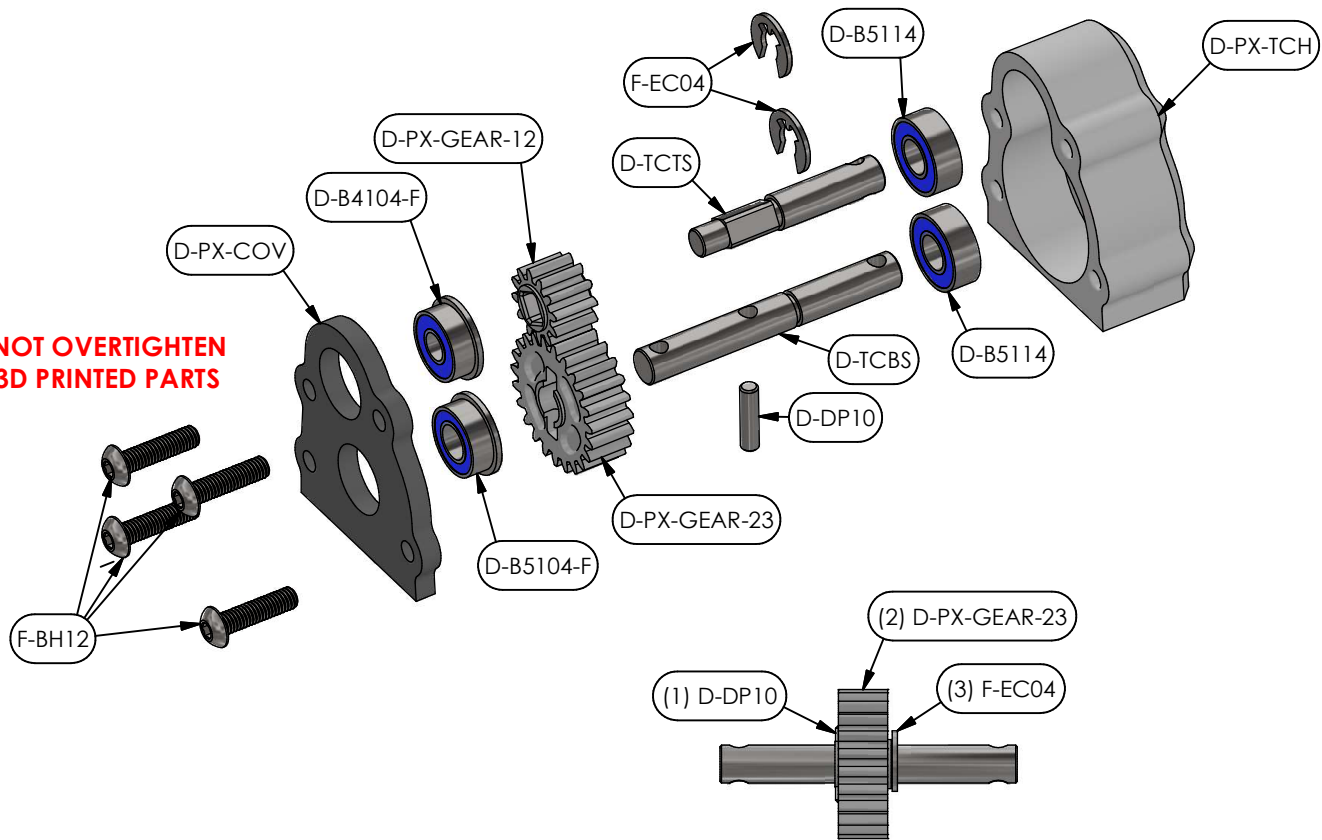
D-TCBG - (1)
Transfer Case Bottom Gear

**CAUTION DO NOT OVERTIGHTEN
SCREWS INTO 3D PRINTED PARTS**



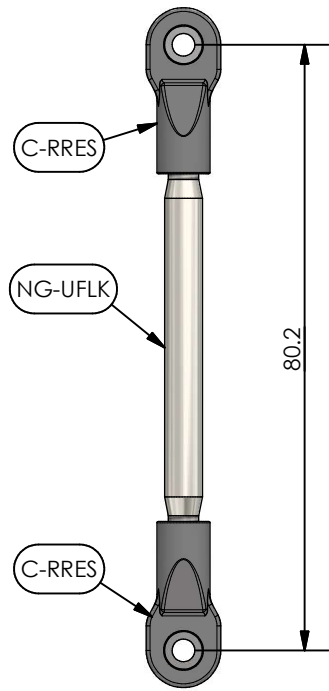
FRONT VIEW

**CAUTION DO NOT OVERTIGHTEN
SCREWS INTO 3D PRINTED PARTS**

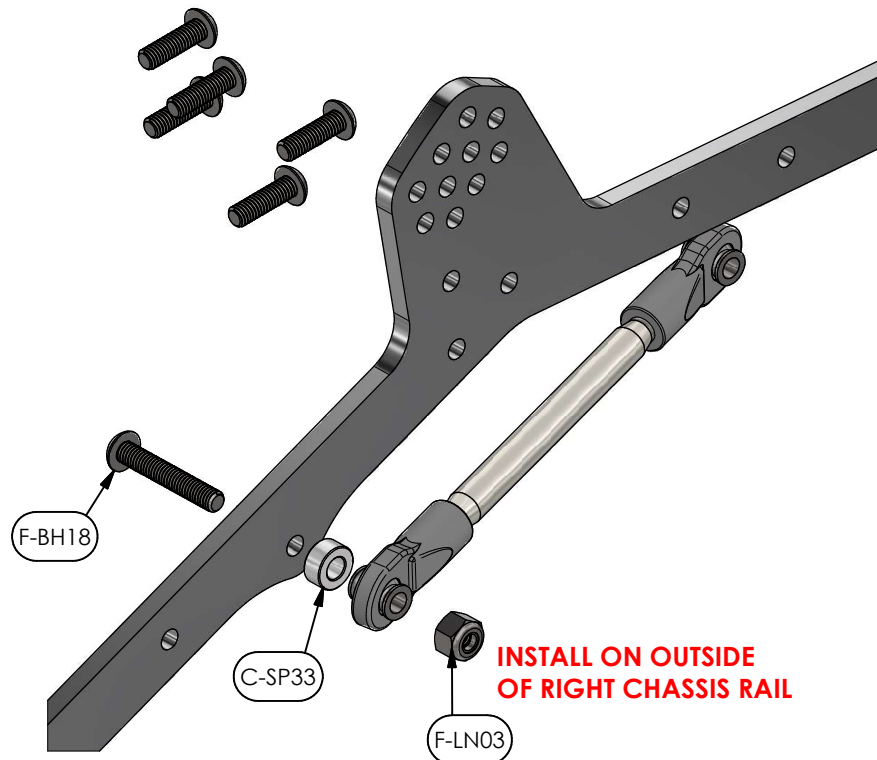


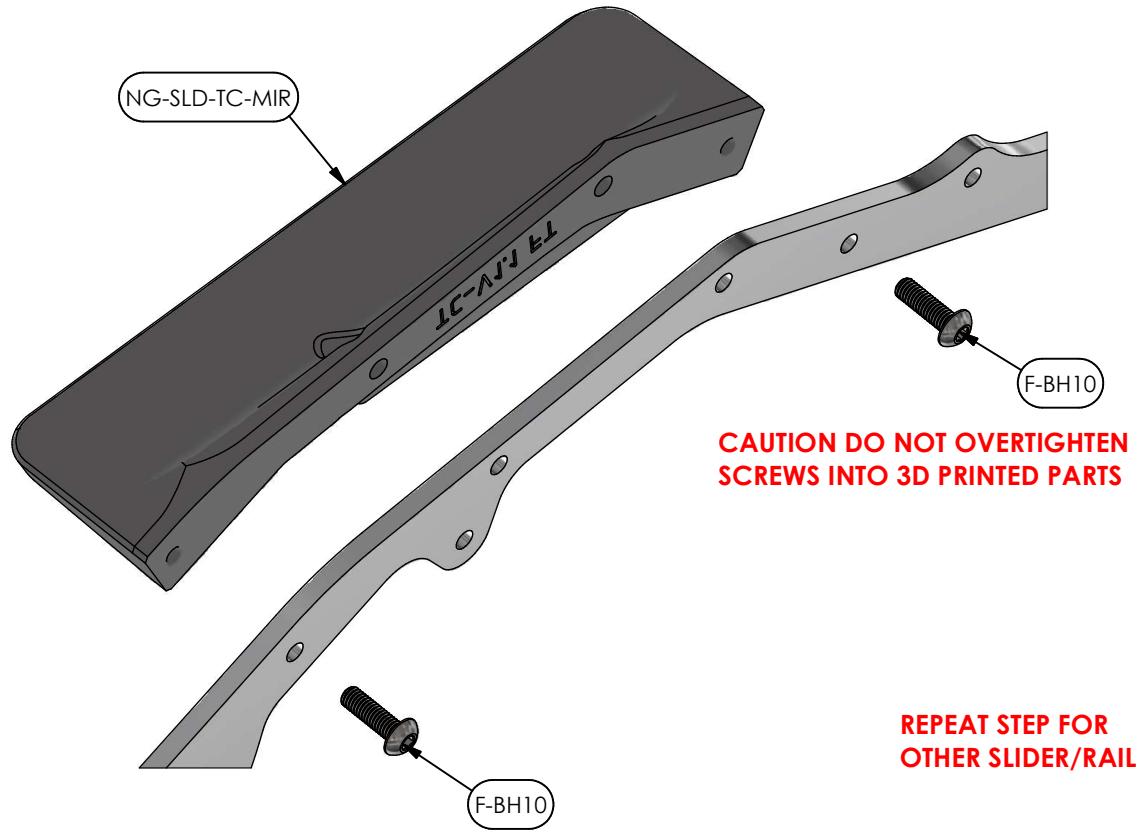
BOTTOM SHAFT ASSEMBLY ORDER:

- 1. CROSS PIN**
- 2. GEAR**
- 3. E-CLIP**



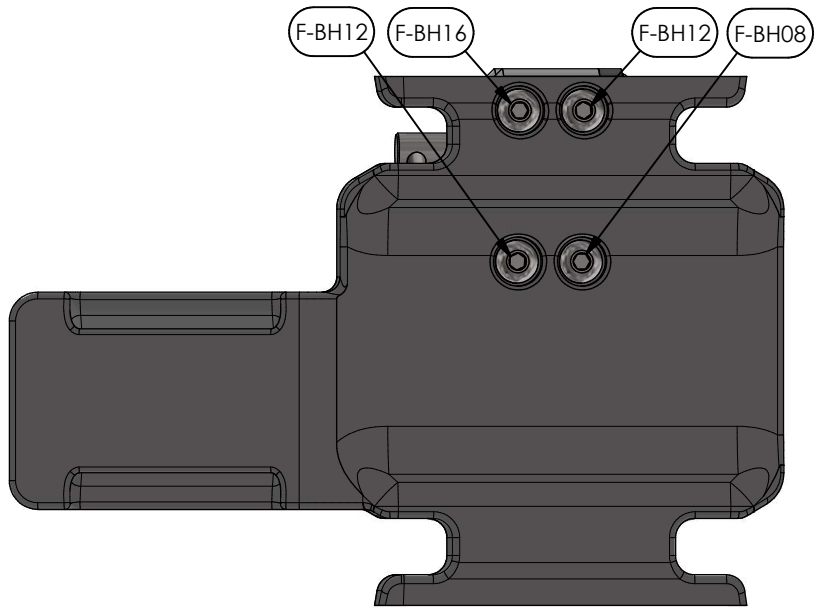
UPPER FRONT LINK



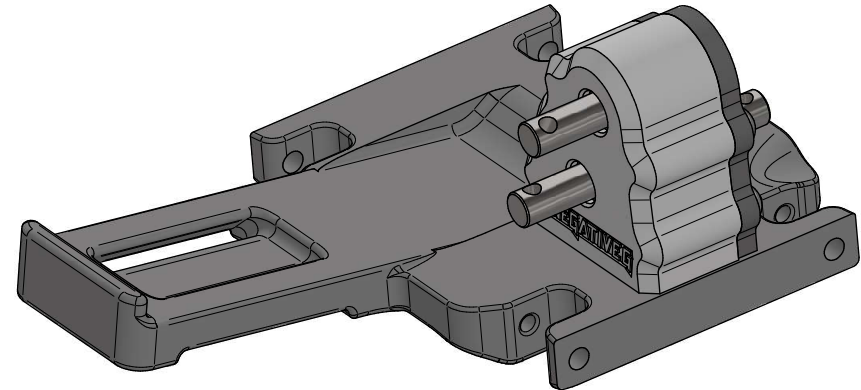


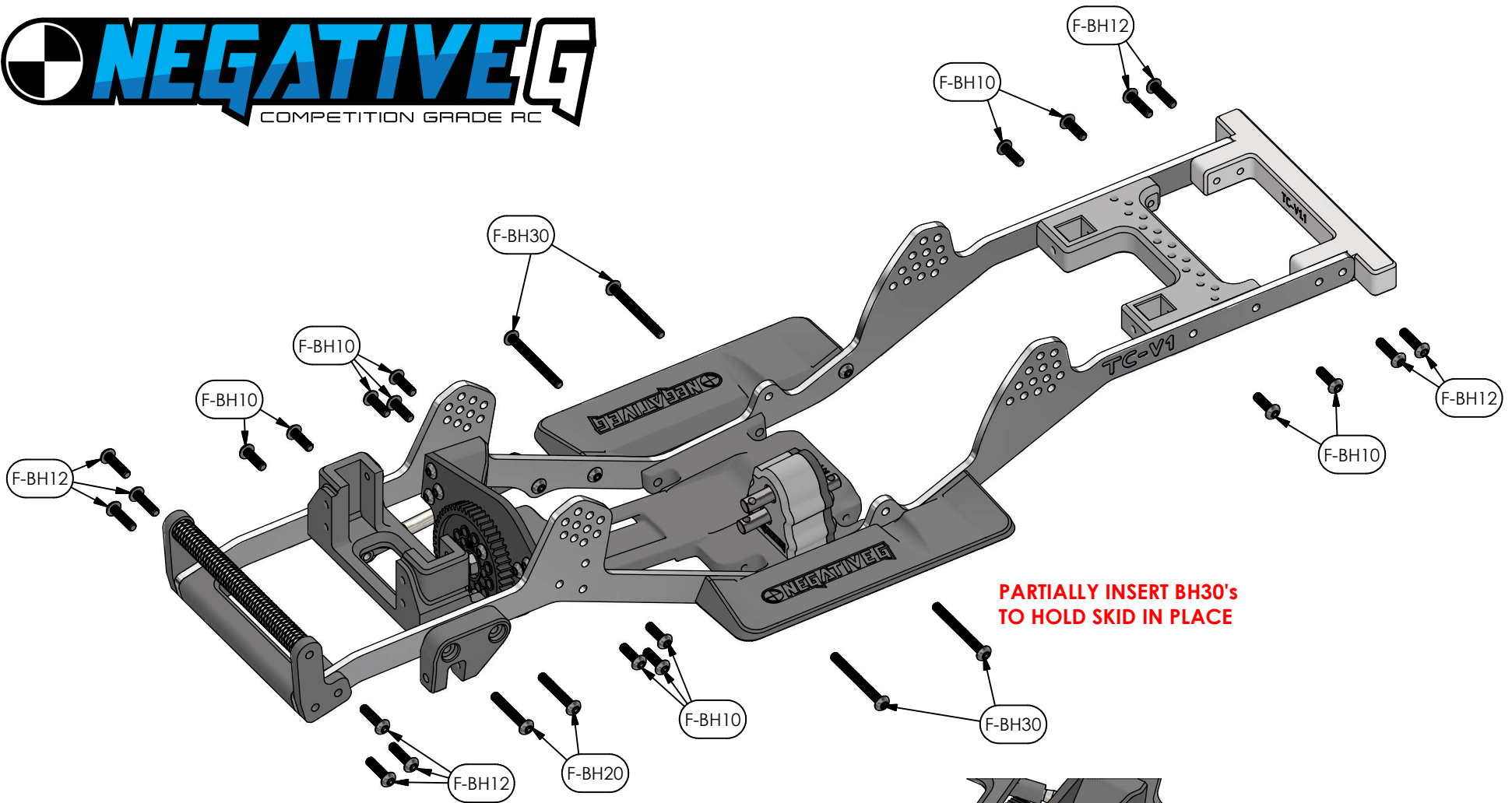
**!!IMPORTANT STEP!
DOUBLE CHECK SCREW LENGTH AND
LOCATION WHEN INSTALLING TRANSFER CASE**

**CAUTION DO NOT OVERTIGHTEN
SCREWS INTO 3D PRINTED PARTS**



TRANSFER CASE ORIENTATION

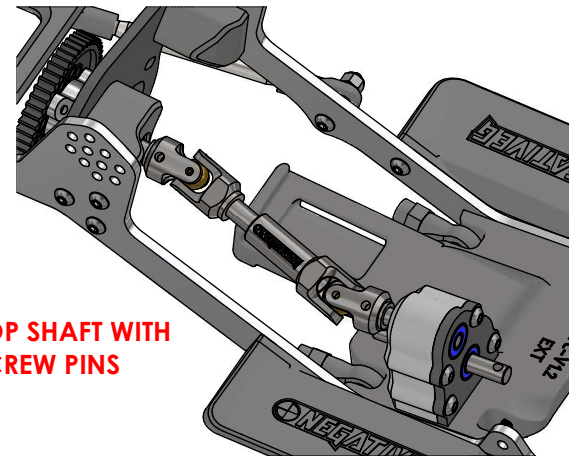


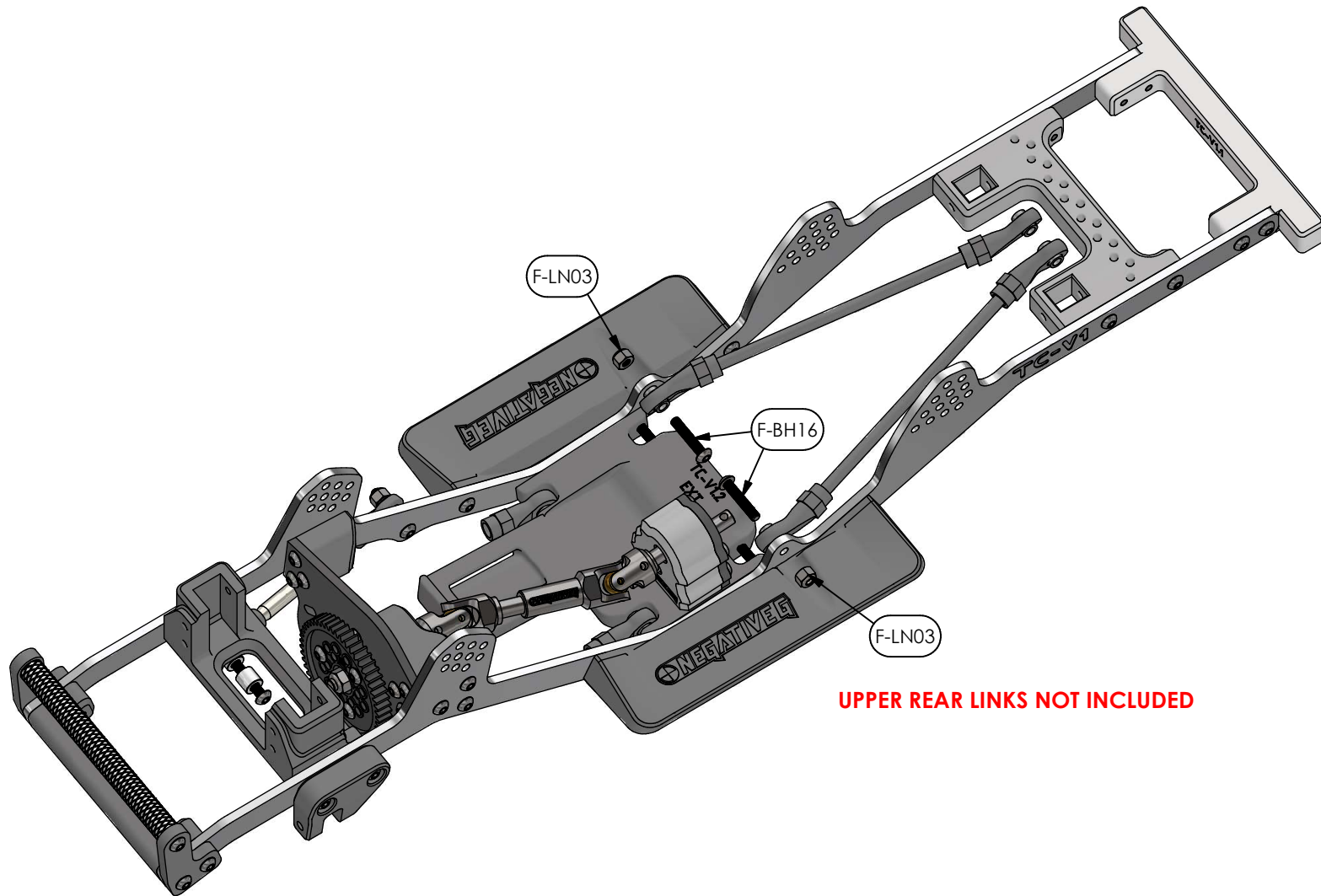


PARTIALLY INSERT BH30's TO HOLD SKID IN PLACE

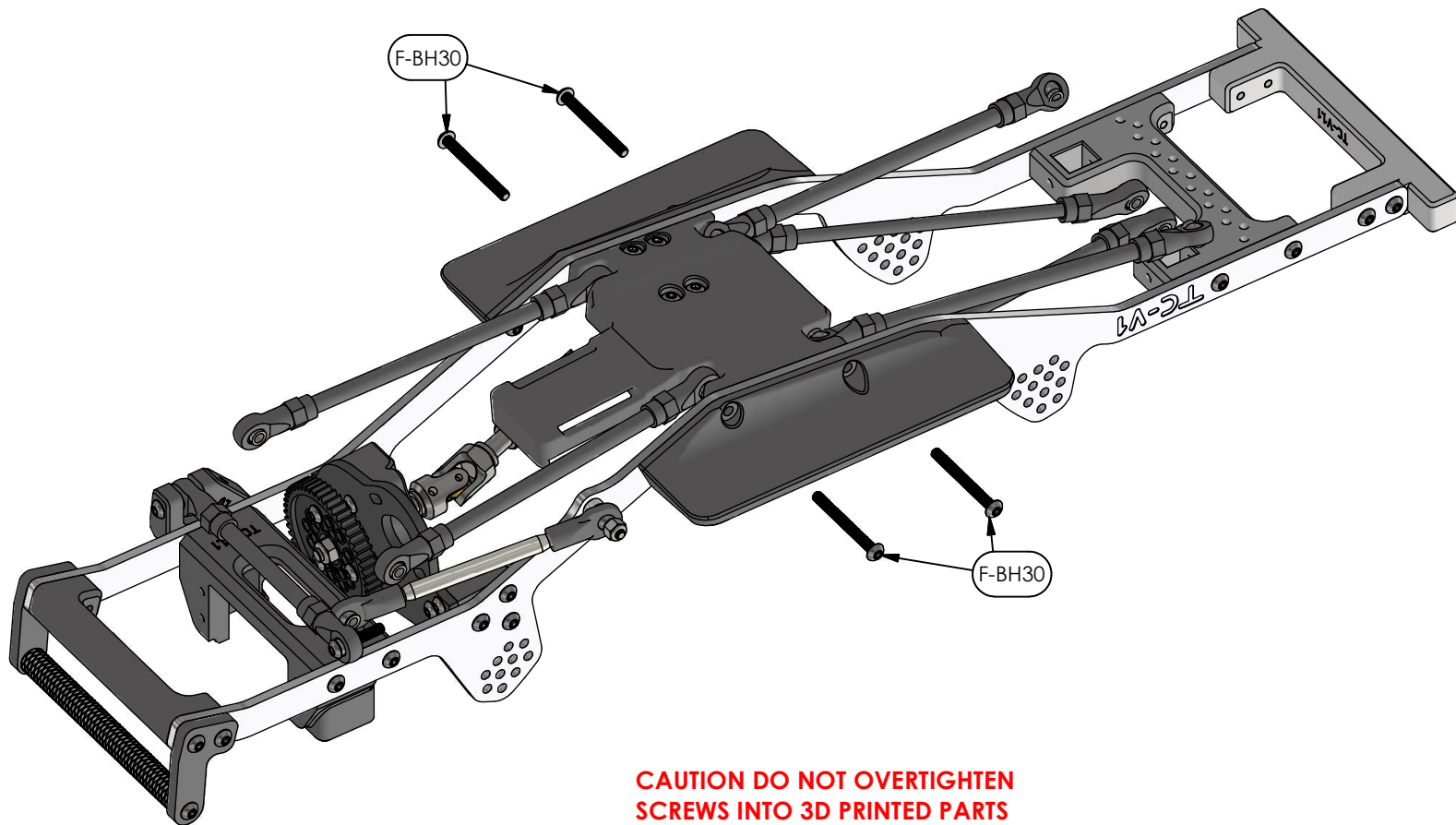
CAUTION DO NOT OVER TIGHTEN SCREWS INTO 3D PRINTED PARTS

INSTALL PROP SHAFT WITH SUPPLIED SCREW PINS



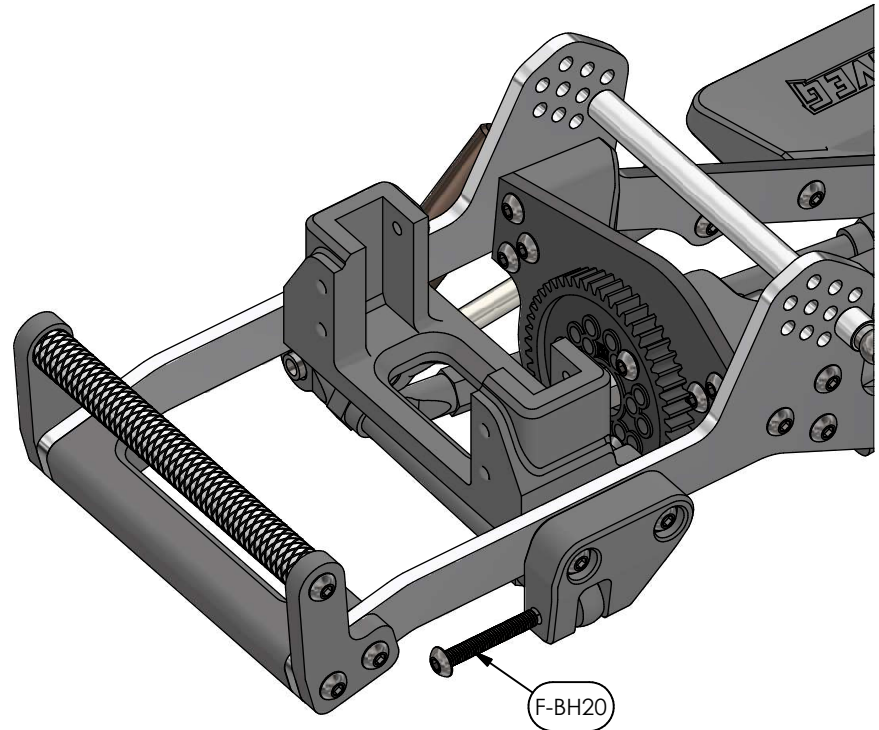


UPPER REAR LINKS NOT INCLUDED

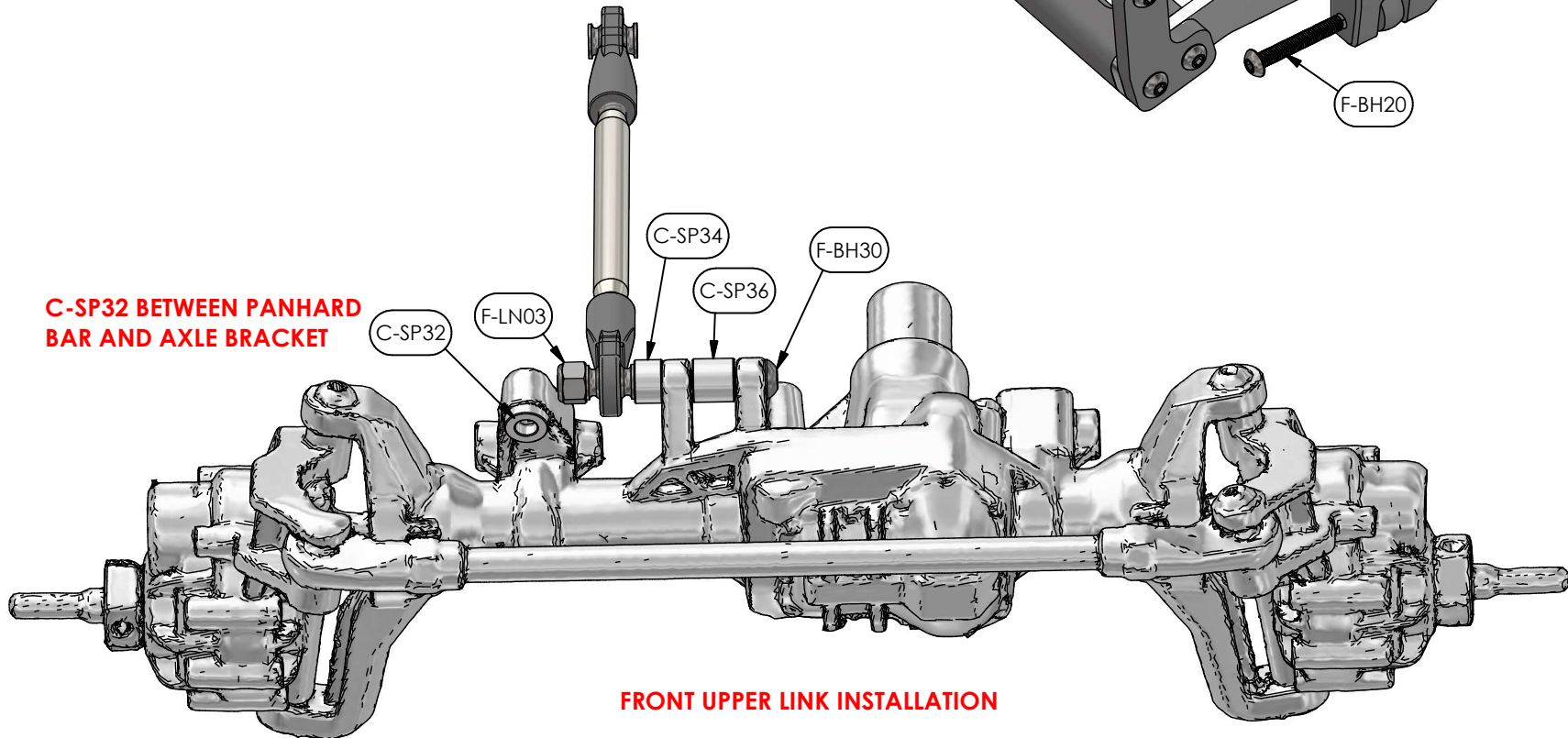


**CAUTION DO NOT OVERTIGHTEN
SCREWS INTO 3D PRINTED PARTS**

LINKS NOT INCLUDED

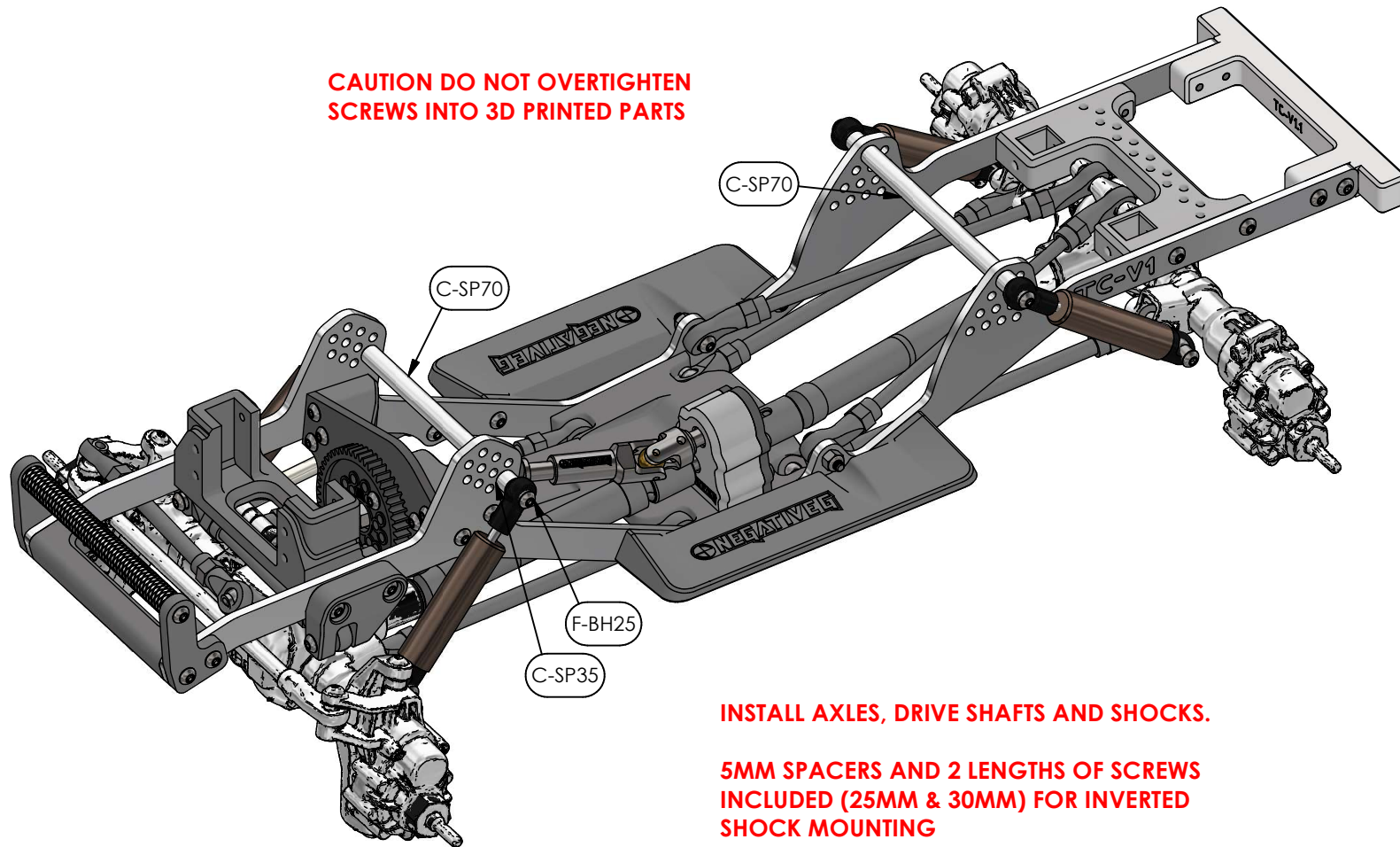


**C-SP32 BETWEEN PANHARD
BAR AND AXLE BRACKET**



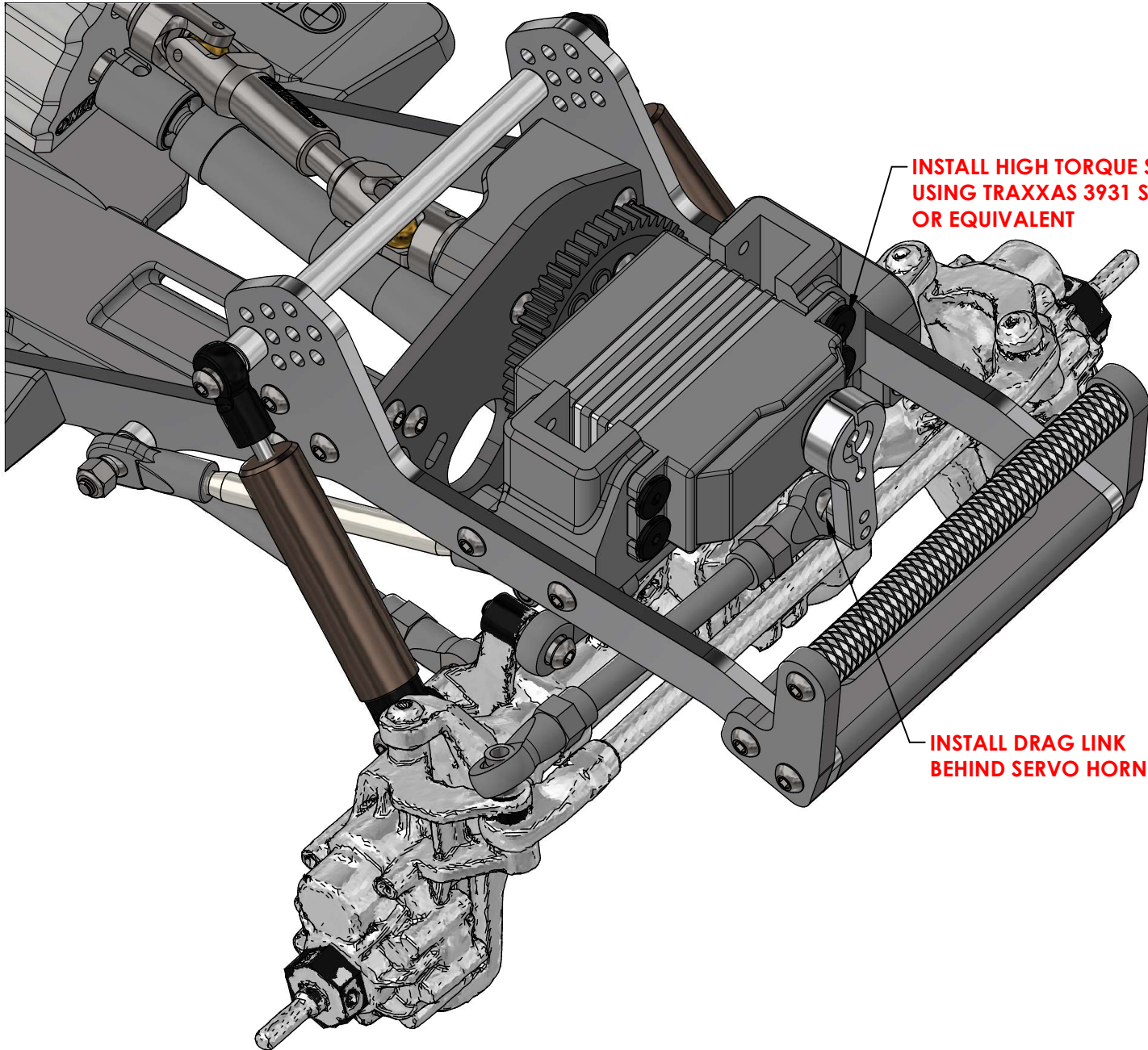
FRONT UPPER LINK INSTALLATION

**CAUTION DO NOT OVERTIGHTEN
SCREWS INTO 3D PRINTED PARTS**



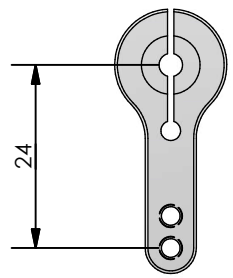
INSTALL AXLES, DRIVE SHAFTS AND SHOCKS.

**5MM SPACERS AND 2 LENGTHS OF SCREWS
INCLUDED (25MM & 30MM) FOR INVERTED
SHOCK MOUNTING**



**INSTALL HIGH TORQUE SERVO
USING TRAXXAS 3931 SCREWS
OR EQUIVALENT**

**INSTALL DRAG LINK
BEHIND SERVO HORN**



**MINIMUM 24MM SERVO
HORN RECOMMENDED**

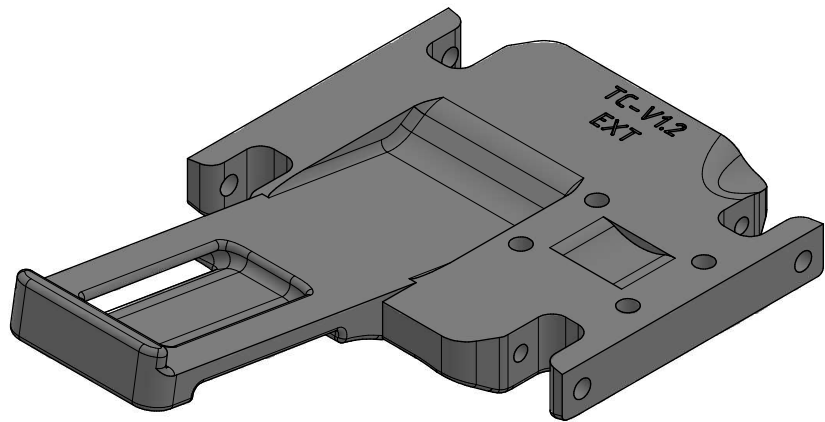


**INSTALL WHEEL/TIRE PACKAGE AND ELECTRONICS.
REQUIRED BUT NOT INCLUDED: TRAXXAS TRA8115
BODY MOUNTS AND BODY MOUNT SCREW PINS**

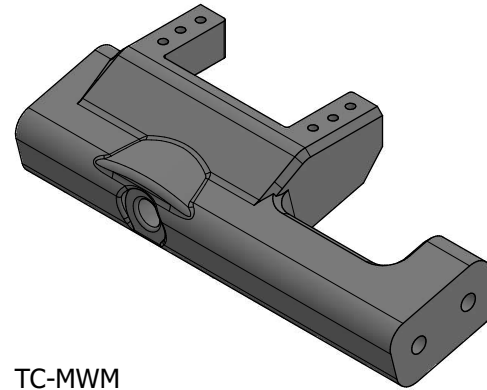
RECOMMENDED SETUP

- **RUN AS FULL DROOP**
- **DRAVTECH OR SIMILAR SHOCKS**
- **SOFT OR ULTRA SOFT SPRINGS**
- **RUBBER BAND LIMIT STRAPS F&R**

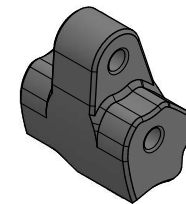
OPTIONAL PARTS
CHECK <http://www.negativeg.com> FOR AVAILABILITY AND PRICING



C-3DSL
Center Skid - Extended



TC-MWM
MICRO WINCH BUMPER



Rear Link Riser 10mm v2
TC-V1 10mm Link Riser Rear

DON'T LET GRAVITY WIN!