



This all new **LCG Chassis system** is a universal design for portal axles including TRX4 and Capra

Designed with **state of the art 3D modeling software** to optimize suspension geometry, component location and **center of gravity**.

Kit features:

- ***NEW*** All plastic parts are printed with **ultra lightweight high-tech polymer PA12 Nylon**
- Divorced primary drive with a compact and lightweight **Generation 2** transfer case
- **Negative G RC** steel prop shaft with brass pivot balls included
- **Negative G RC** 5mm titanium high clearance link set included
- Stainless Steel primary drive and transfer case shafts
- Stainless Steel screws, nuts and miscellaneous hardware
- Genuine **Vanquish Incision** 52t 32p spur gear included
- Forward skid design for excellent weight distribution, low center of gravity
- Improved suspension geometry with built in anti squat, a low instant center and improved roll center
- Specifically designed for outrunner motors up to 40mm in length
- 3mm Forged Carbon Fiber frame rails with Forged Carbon Fiber adjustable shock keys
- 3mm Forged Carbon Fiber motor mount plate
- 4 link front suspension with your choice of TRX4, Capra or F10 SOA mounts
- For optimum performance a **full droop setup front and rear is recommended**. Just add your axles, driveshafts, shocks and electronics package and hit the rocks!

! CAUTION !

DO NOT OVERTIGHTEN SCREWS INTO 3D PRINTED PARTS. POWERED SCREWDRIVERS GENERATE HEAT WHEN INSTALLING SCREWS. IF YOU ARE USING A POWERED SCREWDRIVER, INSTALL TO 75% DEPTH AND LET THE PLASTIC COOL OFF. HAND TIGHTEN TO 100%.

STRIPPED HOLES ARE NOT COVERED UNDER WARRANTY!

Please read this entire instruction manual prior to assembly



F-BH35 - (2)
M3x35mm Button Head



F-BH30 - (2)
M3x30mm Button Head



F-BH18 - (4)
M3x18mm Button Head



F-BH16 - (2)
M3x16mm Button Head



F-BH12 - (6)
M3x12mm Button Head



F-BH10 - (27)
M3x10mm Button Head



F-BH08 - (2)
M3x8mm Button Head



F-FH08 - (2)
M3x8mm Flat Head



F-BH06 - (3)
M3x6mm Button Head



F-SS16 - (4)
M3x16mm Set Screw



F-EC04 - (3)
4mm E Clip



C-SP33 - (4)
3x3 Spacer



D-SP55 - (1)
5x5 Spacer



F-LN03 - (14)
3mm Locknut



F-LN04 - (1)
M4mm Lock Nut



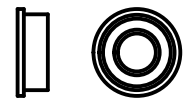
D-B5114 - (5)
5x11x4 Bearing



D-B4114 - (1)
4x11x4 Bearing



D-B4104-F - (1)
4x10x4 Bearing Flanged



D-B5104-F - (1)
5x10x4 Bearing Flanged



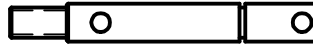
F-FW04 - (1)
4mm Flat Washer



DB-2.4 - (1)
2.4mm Drill Bit



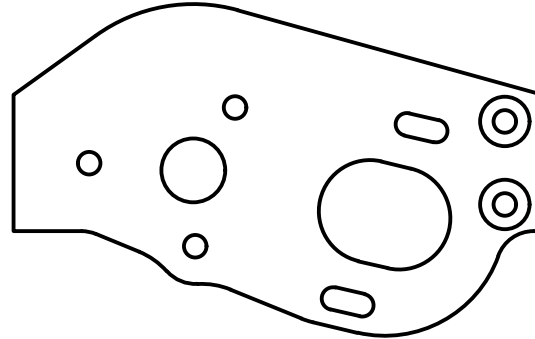
D-TCBS - (1)
Transfer Case Bottom Shaft



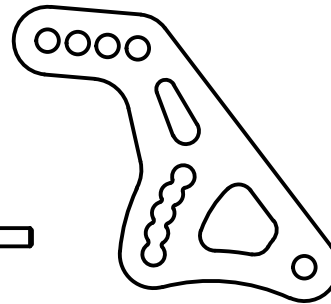
D-TS - (1)
Transmission Shaft



D-TCTS - (1)
Transfer Case Top Shaft



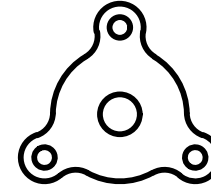
F3-MP - (1)
F3 Motor Plate



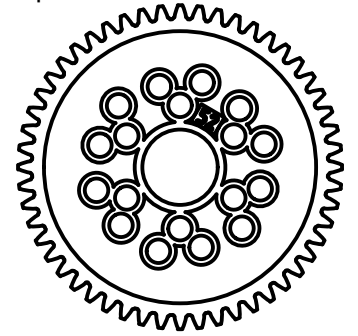
F3-SK - (4)
F3 Shock Key



C-SP70 - (4)
M3x70mm Chassis Spacer



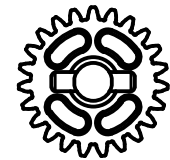
D-NGSA - (1)
Spur Adapter v2



D-SG52 - (1)
Incision 52t Spur



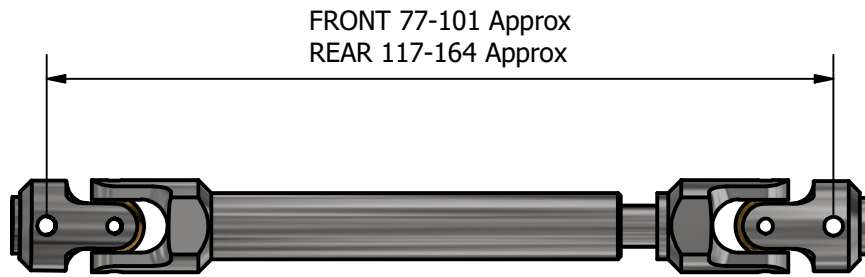
D-DP10 - (2)
2.5mm x 10mm Dowel Pin



D-PX-GEAR-23 - (1)
23t Bottom Gear



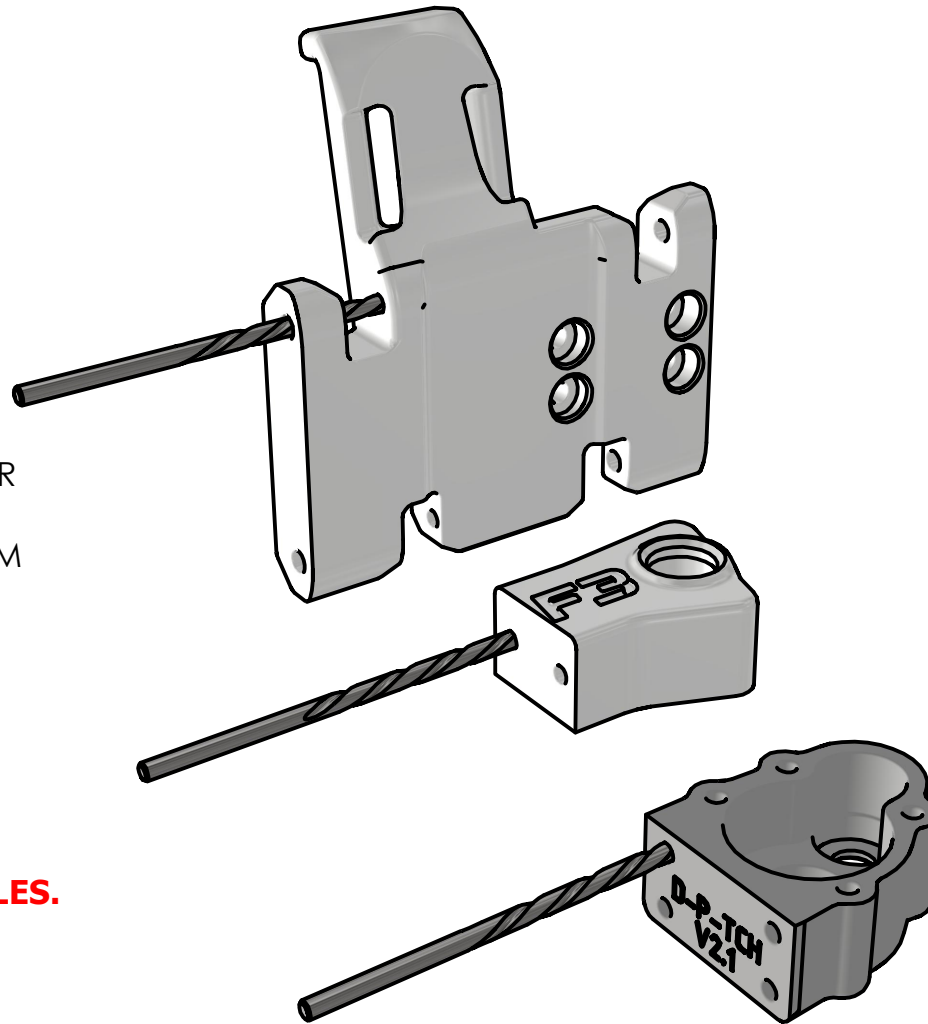
D-PX-GEAR-12 - (1)
12t Top Gear

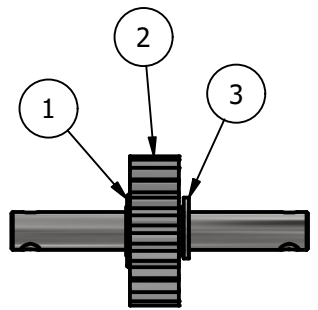
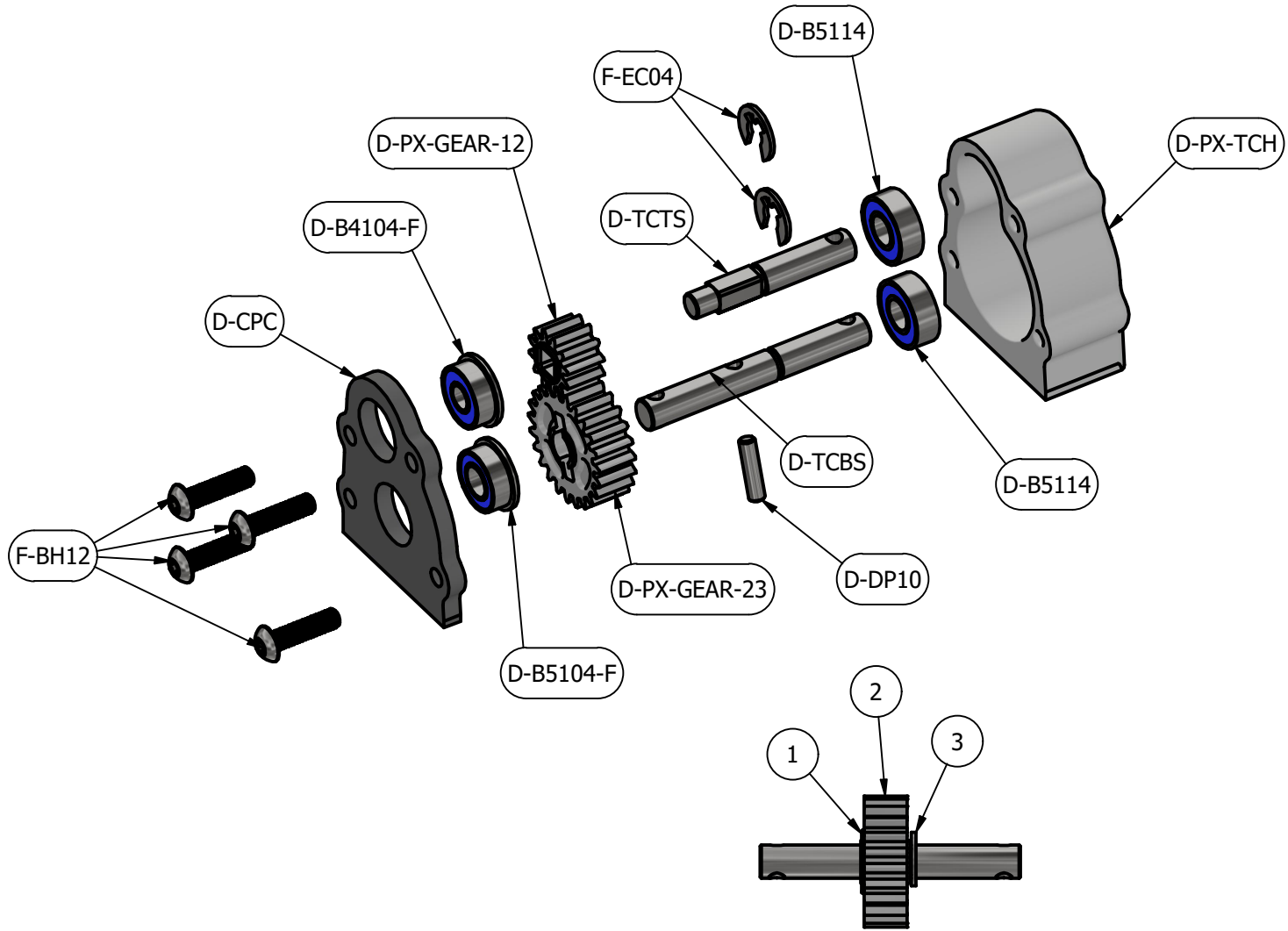


USE THE INCLUDED 2.4mm DRILL BIT TO CLEAR ANY LEFTOVER SUPPORT MATERIAL FROM HOLES THAT WILL BE THREADED. CLEAR FROM BOTH DIRECTIONS AS NEEDED.

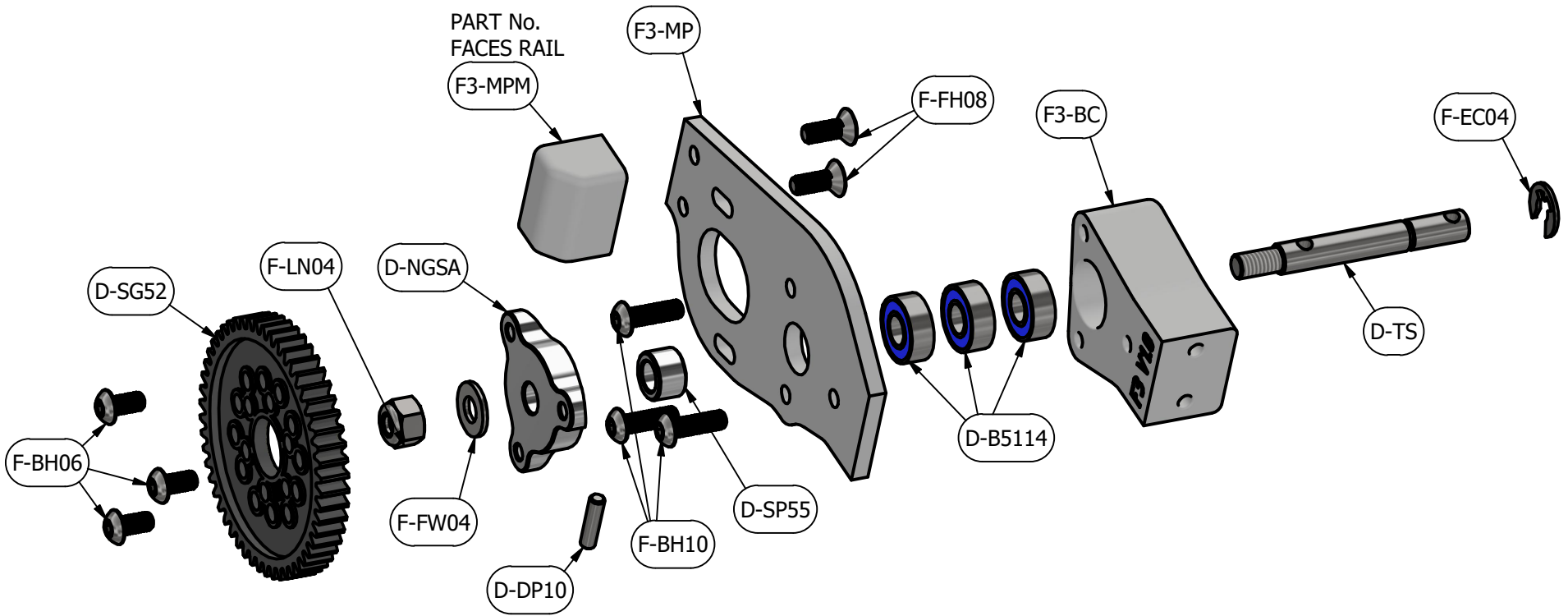
DO NOT DRILL TOO DEEP INTO BLIND HOLES. USE LIGHT PRESSURE AND BE CAUTIOUS.

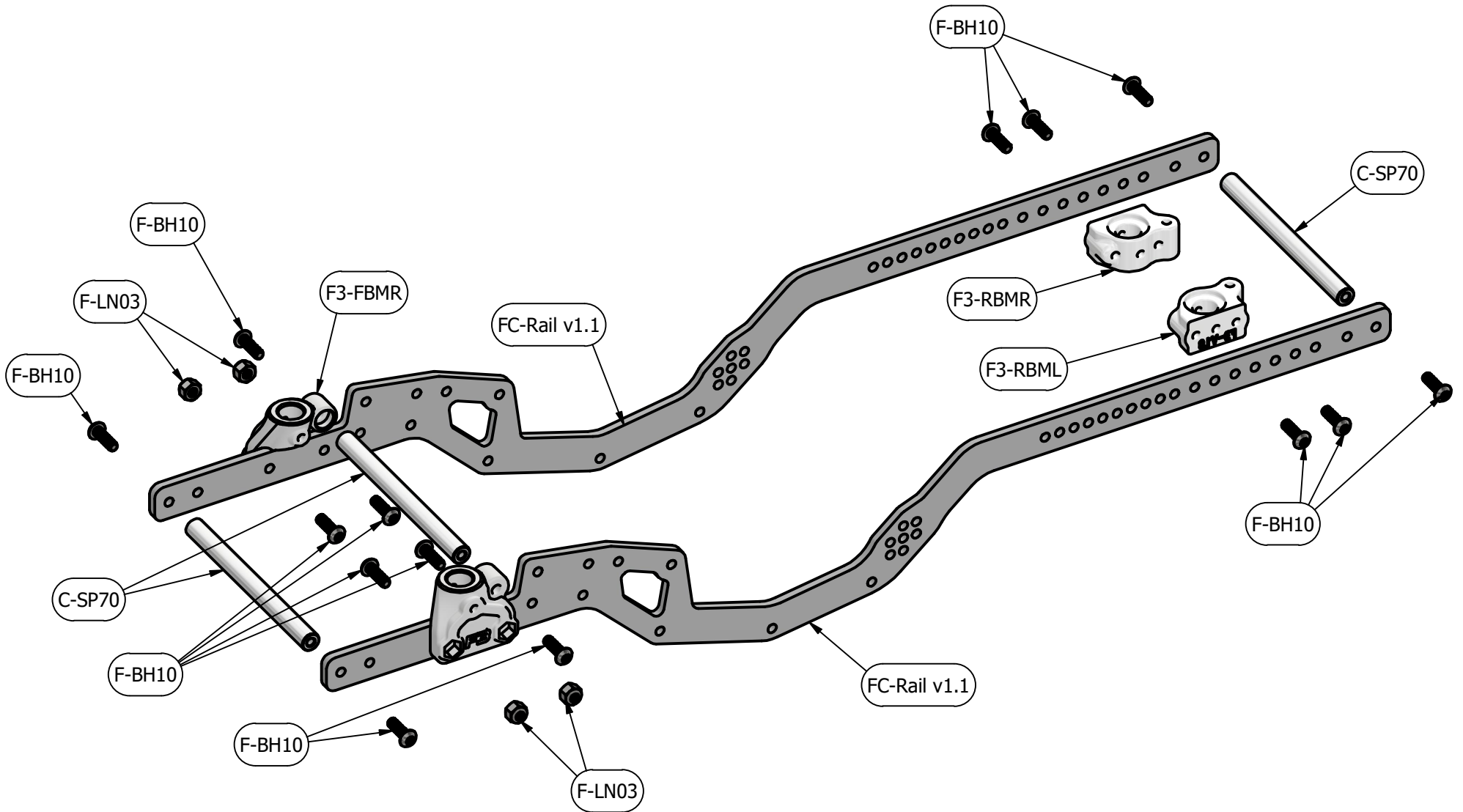
CHECK HOLES PRIOR TO USING THE SUPPLIED DRILL BIT. NOT ALL HOLES WILL NEED CLEARING.



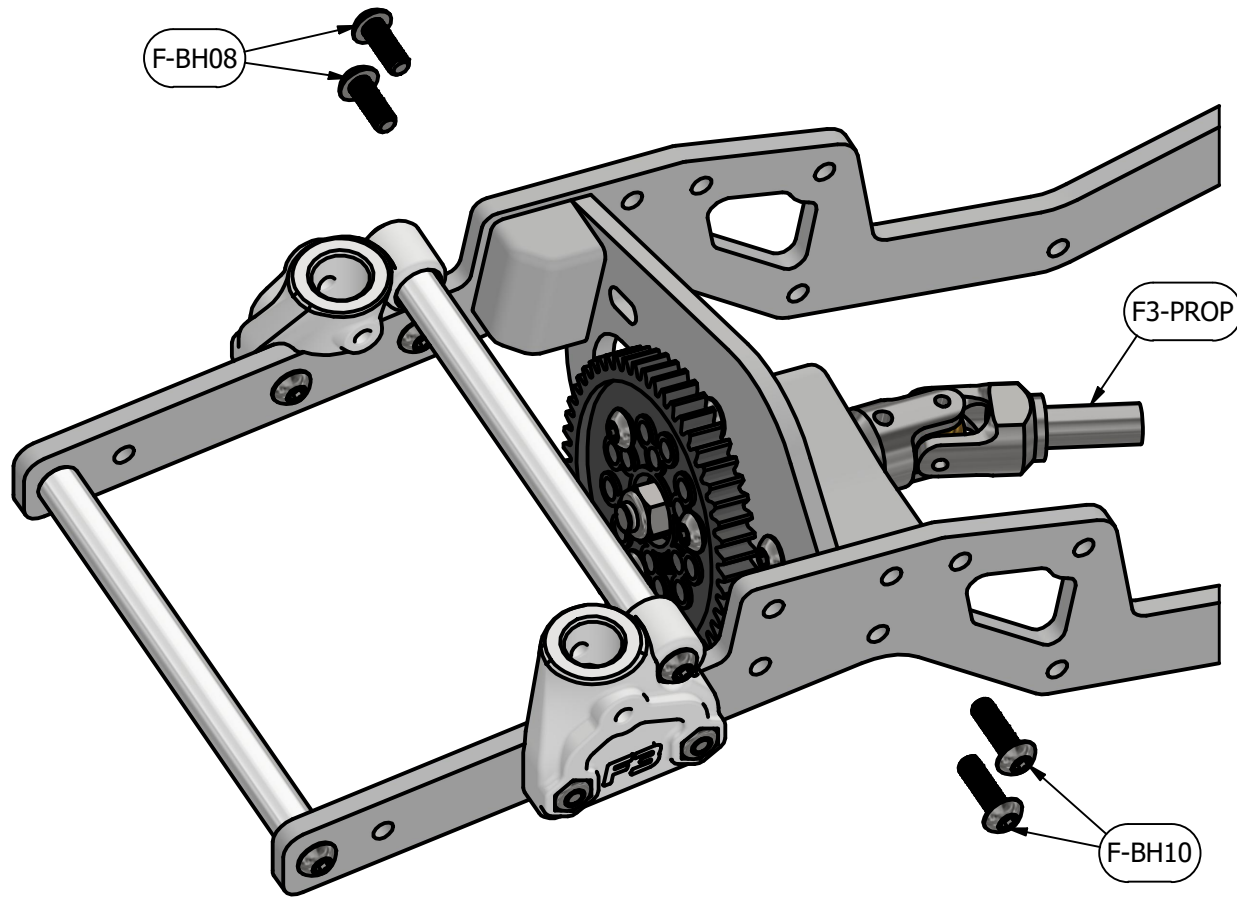


- Assembly Order
1. D-DP10
 2. D-PX-GEAR23
 3. F-EC04

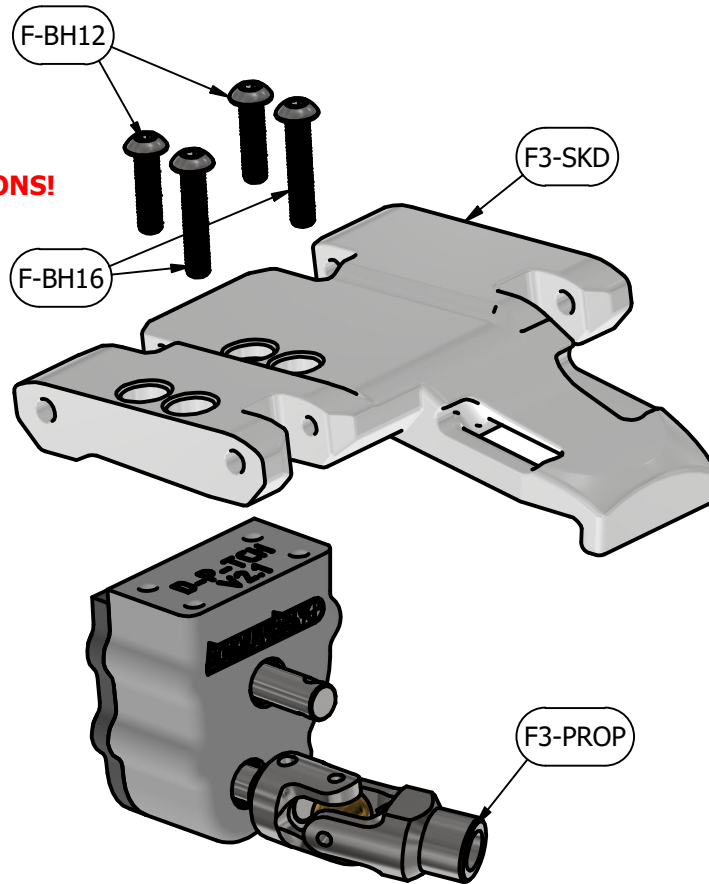




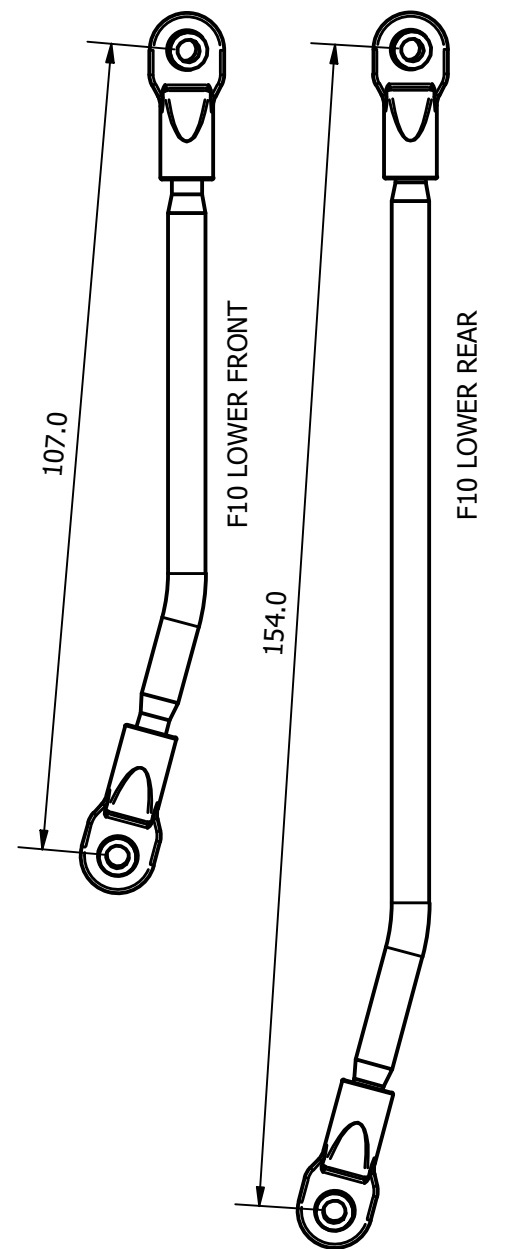
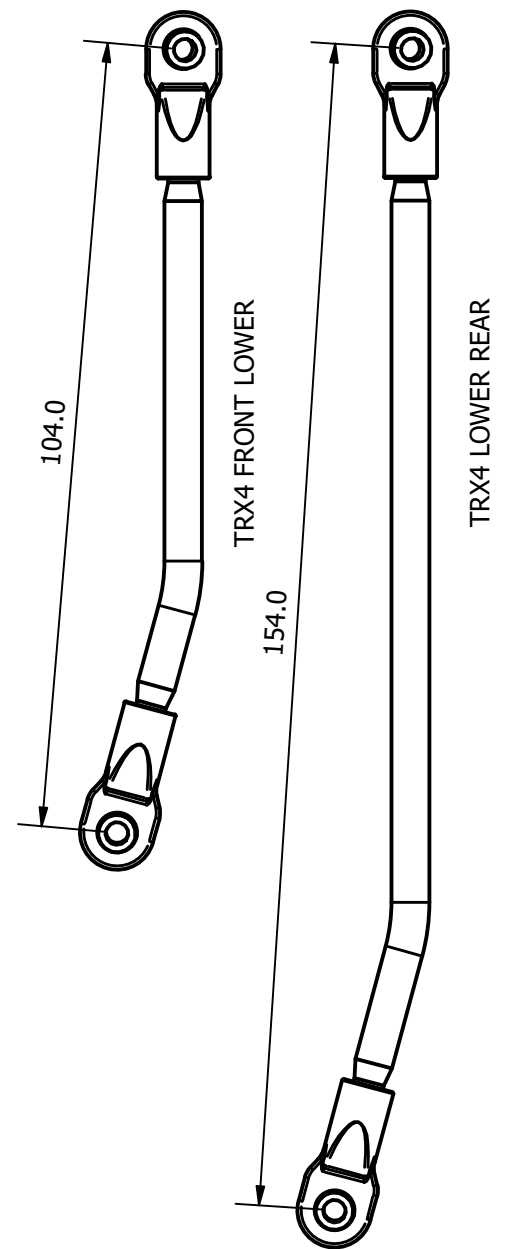
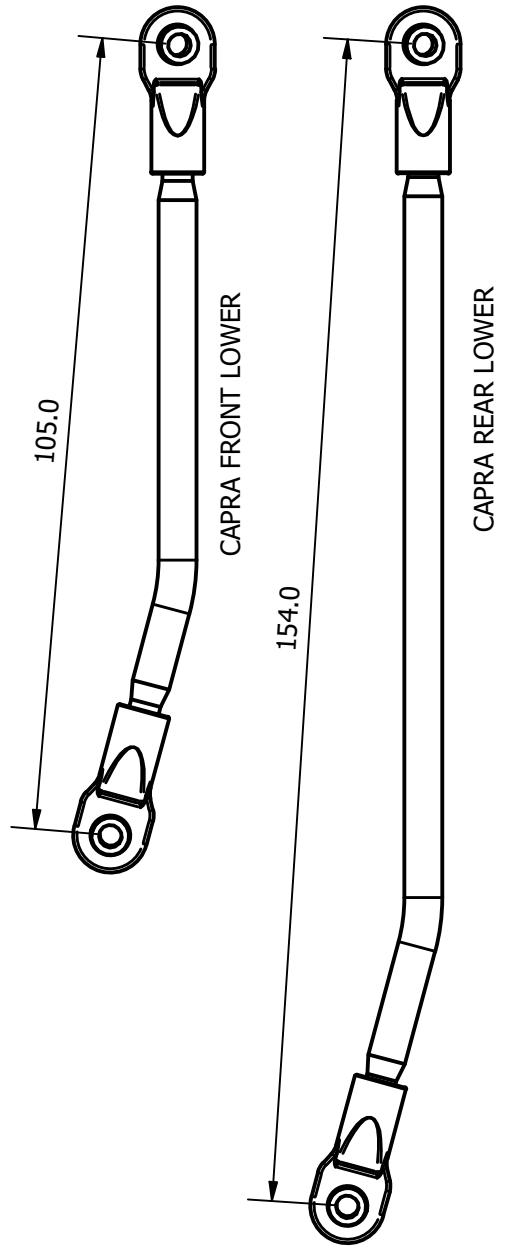
**INSTALL FRONT BODY MOUNTS
PRIOR TO CHASSIS SPACERS!**

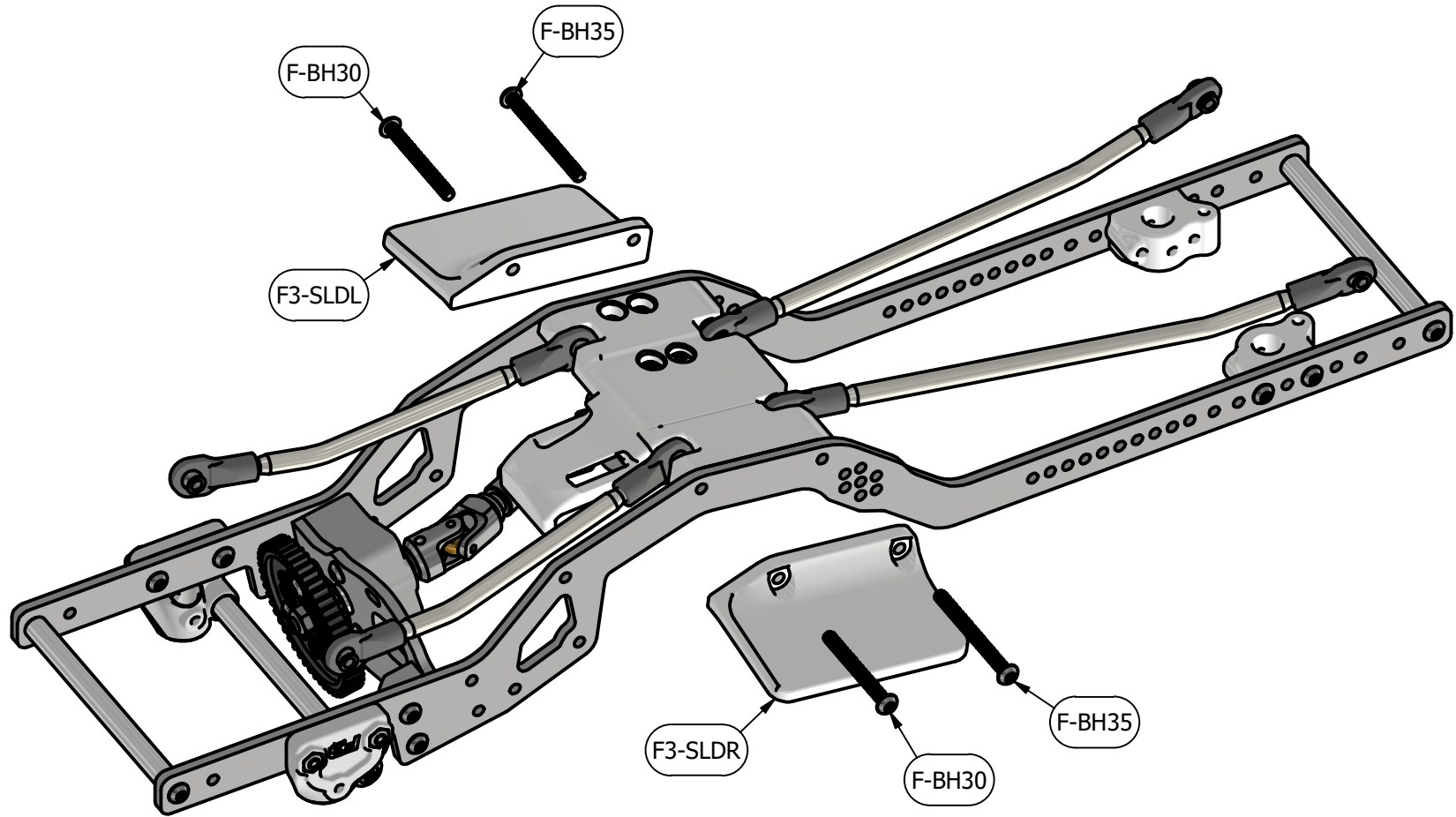


PLEASE NOTE SCREW LOCATIONS!

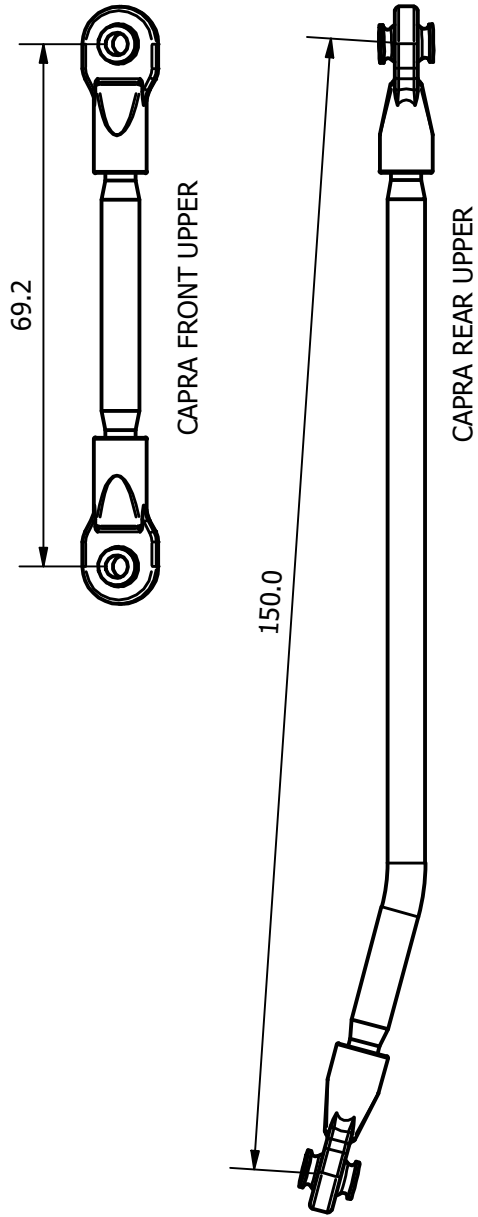


LINK LENGTHS ARE APPROXIMATE. ADJUST AS NECESSARY

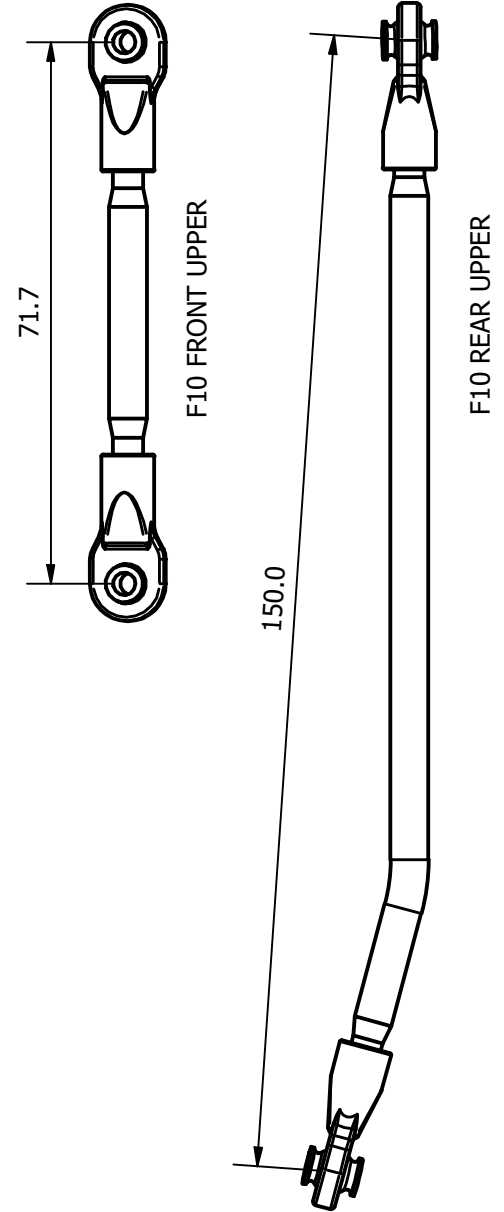
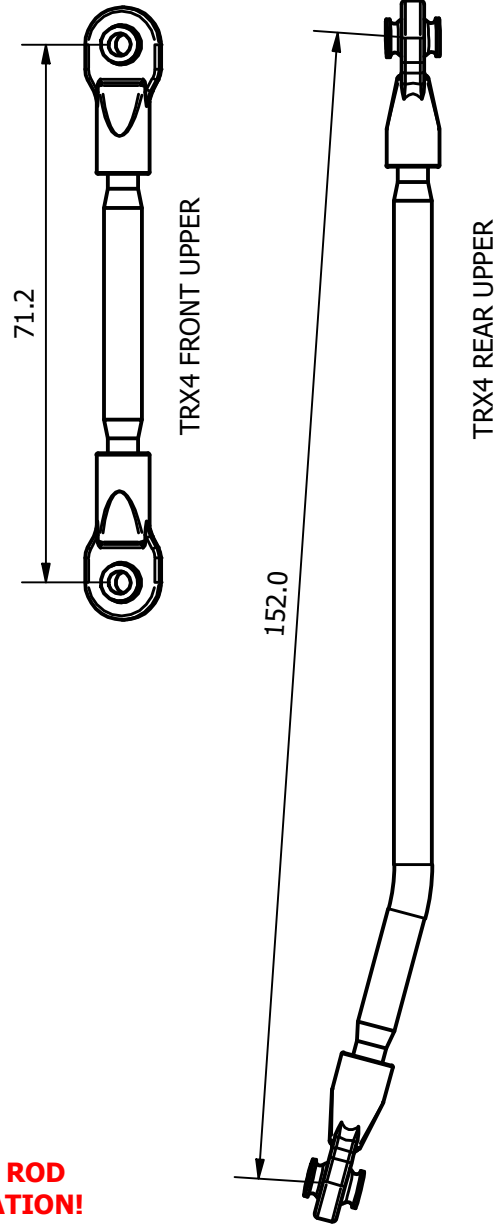


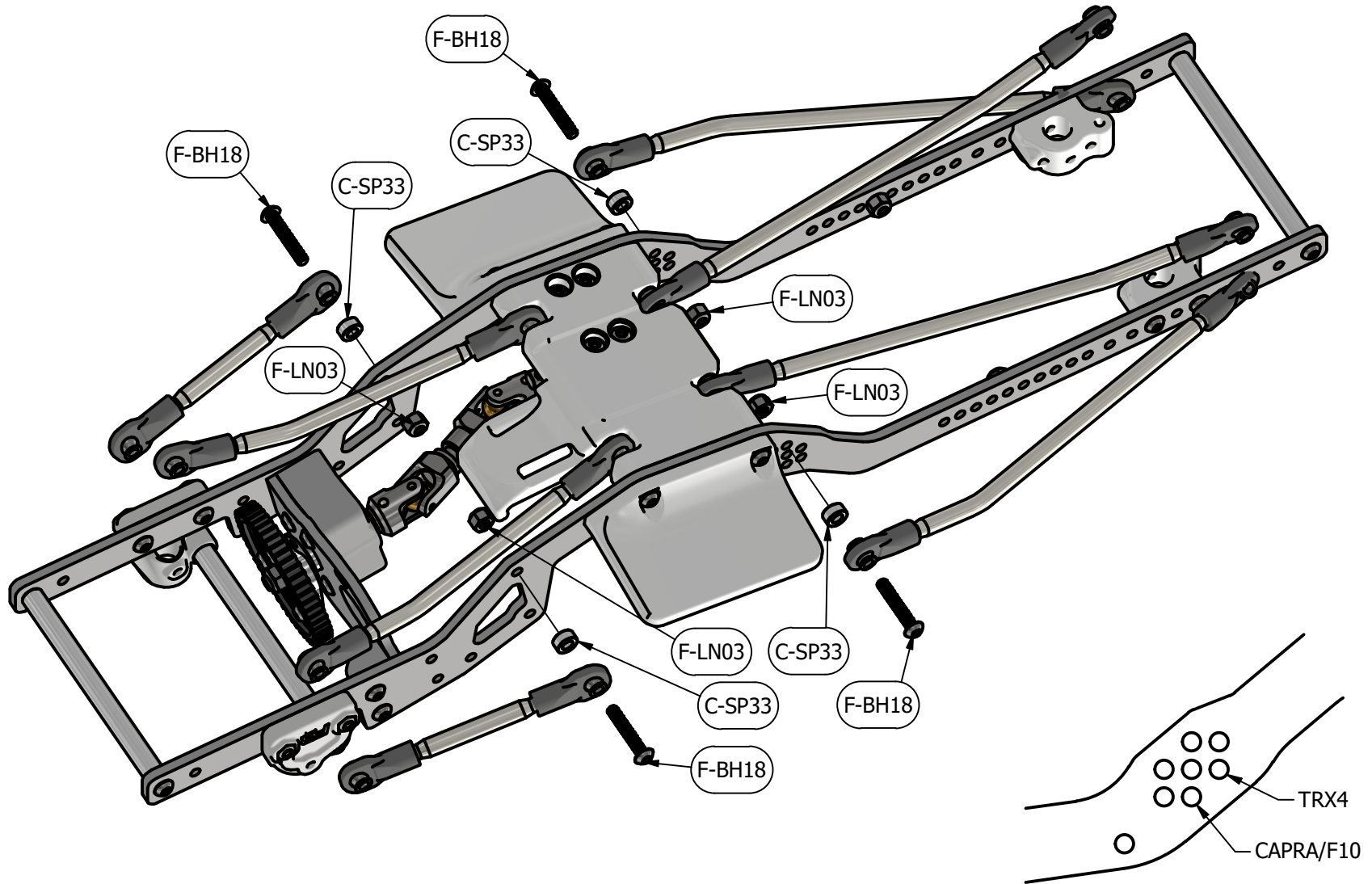


LINK LENGTHS ARE APPROXIMATE. ADJUST AS NECESSARY

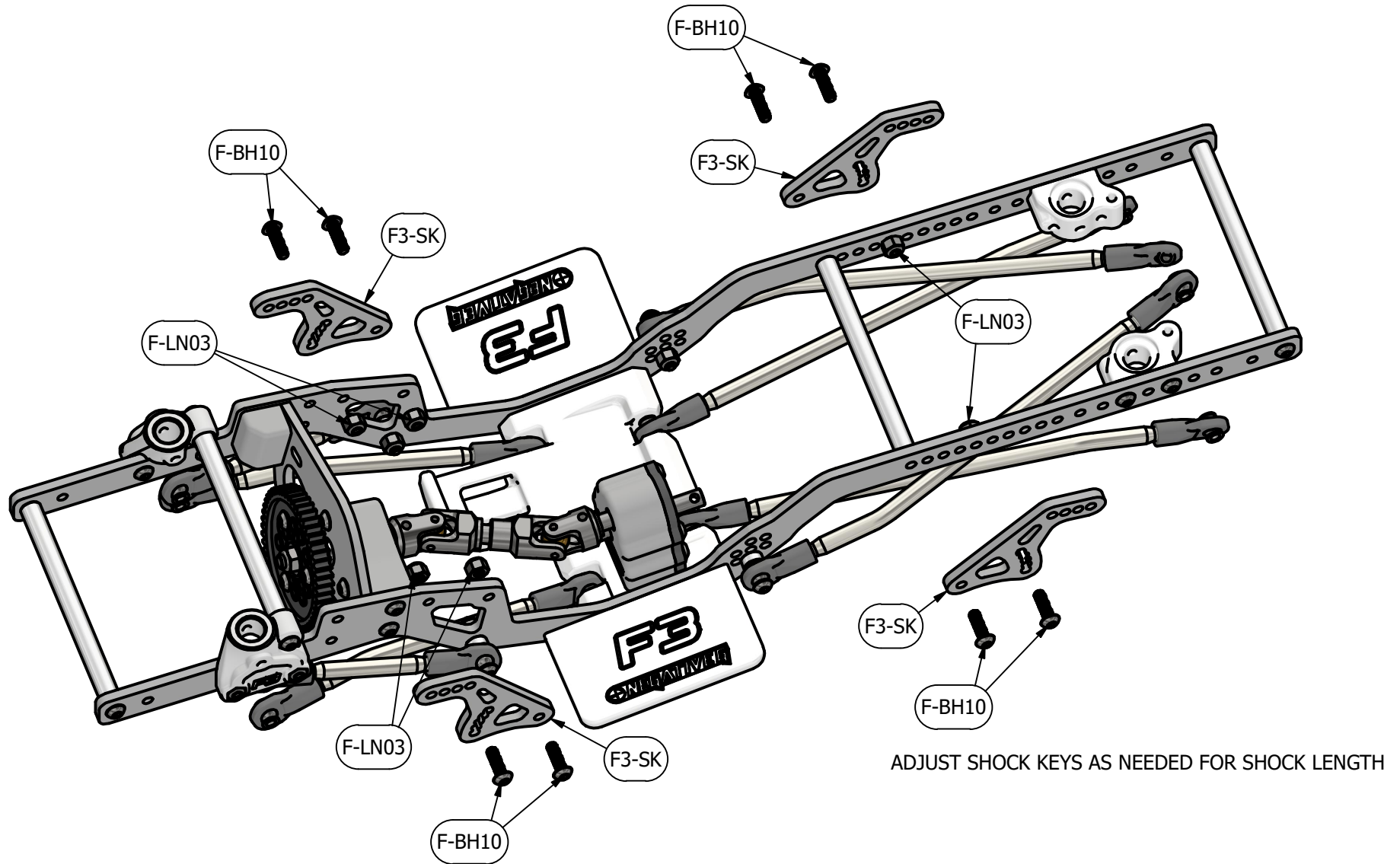


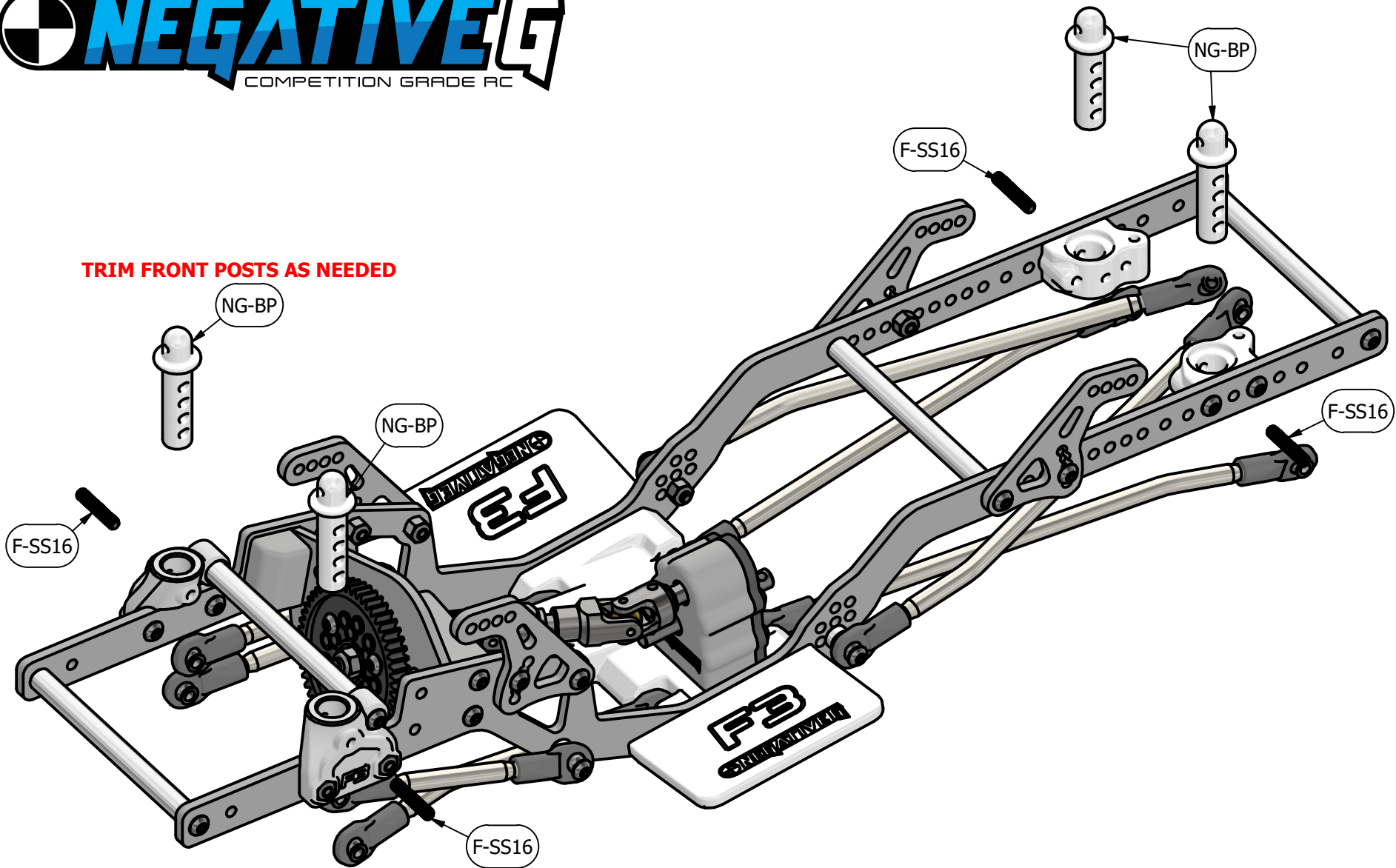
**PLEASE NOTE ROD
END ORIENTATION!**





ADJUST AS NECESSARY





IT IS HIGHLY RECOMMENDED TO RUN THE BODY POSTS AS FLUSH/LOW AS POSSIBLE

ADD YOUR FAVORITE PARTS TO FINISH AND GO HIT THE ROCKS!!

DON'T LET GRAVITY WIN!